

## Product datasheet for **TA337842**

### TMEM139 Rabbit Polyclonal Antibody

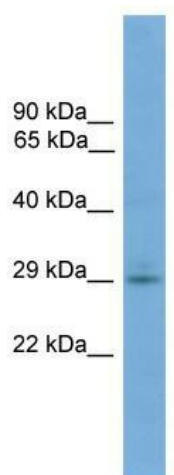
#### Product data:

Product Type:	Primary Antibodies
Applications:	WB
Recommended Dilution:	WB
Reactivity:	Human
Host:	Rabbit
Isotype:	IgG
Clonality:	Polyclonal
Immunogen:	The immunogen for anti-TMEM139 antibody: synthetic peptide directed towards the N terminal of human TMEM139. Synthetic peptide located within the following region: ITPVAYFFLTLGGFFLFAYLLVRFLEWGLRSQSQSMQTESPGPSGNARDN
Formulation:	Liquid. Purified antibody supplied in 1x PBS buffer with 0.09% (w/v) sodium azide and 2% sucrose.
Purification:	Affinity Purified
Conjugation:	Unconjugated
Storage:	Store at -20°C as received.
Stability:	Stable for 12 months from date of receipt.
Predicted Protein Size:	24 kDa
Gene Name:	transmembrane protein 139
Database Link:	<a href="#">NP_699176</a> <a href="#">Entrez Gene 135932 Human</a> <a href="#">Q8IV31</a>
Background:	The function of this protein remains unknown.
Synonyms:	FLJ90586
Note:	Immunogen Sequence Homology: Human: 100%; Dog: 86%; Pig: 86%; Horse: 86%; Rabbit: 86%; Bovine: 79%
Protein Families:	Transmembrane



[View online »](#)

Product images:



WB Suggested Anti-TMEM139 Antibody Titration:  
0.2-1 ug/ml; Positive Control: COLO205 cell lysate