

## Product datasheet for **TA337836**

### TMEM161B Rabbit Polyclonal Antibody

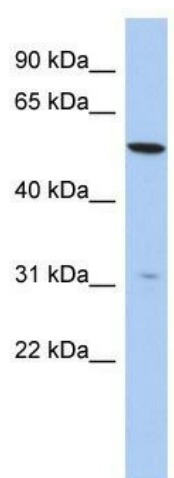
#### Product data:

Product Type:	Primary Antibodies
Applications:	WB
Recommended Dilution:	WB
Reactivity:	Human
Host:	Rabbit
Isotype:	IgG
Clonality:	Polyclonal
Immunogen:	The immunogen for anti-TMEM161B antibody: synthetic peptide directed towards the N terminal of human TMEM161B. Synthetic peptide located within the following region: GSLRWYQHPTTEEELRILAGKQKGGTKKDRKYNHIESKPLTIPKDIDLH
Formulation:	Liquid. Purified antibody supplied in 1x PBS buffer with 0.09% (w/v) sodium azide and 2% sucrose. <i>Note that this product is shipped as lyophilized powder to China customers.</i>
Purification:	Affinity Purified
Conjugation:	Unconjugated
Storage:	Store at -20°C as received.
Stability:	Stable for 12 months from date of receipt.
Predicted Protein Size:	55 kDa
Gene Name:	transmembrane protein 161B
Database Link:	<a href="#">NP_699185</a> <a href="#">Entrez Gene 153396 Human</a> <a href="#">Q8NDZ6</a>
Background:	The specific function of this protein remains unknown.
Synonyms:	FLB3342; PRO1313
Note:	Immunogen Sequence Homology: Dog: 100%; Pig: 100%; Rat: 100%; Horse: 100%; Human: 100%; Mouse: 100%; Bovine: 100%; Guinea pig: 100%; Rabbit: 93%; Zebrafish: 85%
Protein Families:	Transmembrane



[View online »](#)

## Product images:



WB Suggested Anti-TMEM161B Antibody  
Titration: 0.2-1 ug/ml; ELISA Titer: 1: 1562500;  
Positive Control: HepG2 cell lysate