

## Product datasheet for **TA337835**

### NIM1K Rabbit Polyclonal Antibody

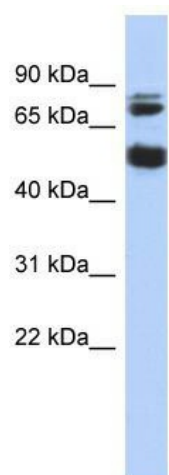
#### Product data:

Product Type:	Primary Antibodies
Applications:	WB
Recommended Dilution:	WB
Reactivity:	Human
Host:	Rabbit
Isotype:	IgG
Clonality:	Polyclonal
Immunogen:	The immunogen for anti-NIM1 antibody: synthetic peptide directed towards the middle region of human MGC42105. Synthetic peptide located within the following region: LSKLHLVMEYAGGGELFGKISTEGKLSEPEskLIFSQIVSAVKHMHENQI
Formulation:	Liquid. Purified antibody supplied in 1x PBS buffer with 0.09% (w/v) sodium azide and 2% sucrose. <i>Note that this product is shipped as lyophilized powder to China customers.</i>
Purification:	Affinity Purified
Conjugation:	Unconjugated
Storage:	Store at -20°C as received.
Stability:	Stable for 12 months from date of receipt.
Predicted Protein Size:	49 kDa
Gene Name:	NIM1 serine/threonine protein kinase
Database Link:	<a href="#">NP_699192</a> <a href="#">Entrez Gene 167359 Human</a> <a href="#">Q8IY84</a>
Background:	The exact functions of NIM1 remain unknown.
Synonyms:	NIM1
Note:	Immunogen Sequence Homology: Dog: 100%; Pig: 100%; Rat: 100%; Human: 100%; Mouse: 100%; Rabbit: 100%; Guinea pig: 100%; Horse: 93%; Bovine: 86%; Zebrafish: 79%
Protein Families:	Druggable Genome, Protein Kinase



[View online »](#)

## Product images:



WB Suggested Anti-NIM1 Antibody Titration: 0.2-1 ug/ml; ELISA Titer: 1: 312500; Positive Control: Jurkat cell lysate