

## Product datasheet for **TA337832**

### LDHD Rabbit Polyclonal Antibody

#### Product data:

Product Type:	Primary Antibodies
Applications:	WB
Recommended Dilution:	WB
Reactivity:	Human
Host:	Rabbit
Isotype:	IgG
Clonality:	Polyclonal
Immunogen:	The immunogen for anti-LDHD antibody: synthetic peptide directed towards the middle region of human LDHD. Synthetic peptide located within the following region: LLVNPDDAEELGRVKAFKAEQLGRRALALHGTCTGEHGIGMGKRQLLEEV
Formulation:	Liquid. Purified antibody supplied in 1x PBS buffer with 0.09% (w/v) sodium azide and 2% sucrose. <i>Note that this product is shipped as lyophilized powder to China customers.</i>
Purification:	Affinity Purified
Conjugation:	Unconjugated
Storage:	Store at -20°C as received.
Stability:	Stable for 12 months from date of receipt.
Predicted Protein Size:	53 kDa
Gene Name:	lactate dehydrogenase D
Database Link:	<a href="#">NP_705690</a> <a href="#">Entrez Gene 197257 Human</a> <a href="#">Q86WU2</a>
Background:	The exact functions of LDHD remain unknown. The protein encoded by this gene belongs to the D-isomer specific 2-hydroxyacid dehydrogenase family. The similar protein in yeast has both D-lactate and D-glycerate dehydrogenase activities. Alternative splicing occurs at this locus and two transcript variants encoding distinct isoforms have been identified.
Synonyms:	DLD

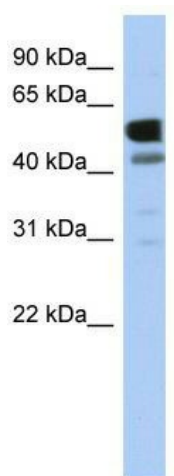


[View online »](#)

**Note:** Immunogen Sequence Homology: Dog: 100%; Human: 100%; Bovine: 100%; Rat: 93%; Rabbit: 93%; Horse: 86%; Mouse: 86%; Pig: 79%; Guinea pig: 79%

**Protein Pathways:** Pyruvate metabolism

**Product images:**



WB Suggested Anti-LDHD Antibody Titration: 0.2-1 ug/ml; ELISA Titer: 1: 1562500; Positive Control: Human heart