

Product datasheet for **TA337829**

FAM71A Rabbit Polyclonal Antibody

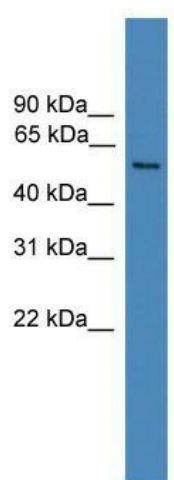
Product data:

Product Type:	Primary Antibodies
Applications:	WB
Recommended Dilution:	WB
Reactivity:	Human
Host:	Rabbit
Isotype:	IgG
Clonality:	Polyclonal
Immunogen:	The immunogen for anti-FAM71A antibody: synthetic peptide directed towards the C terminal of human FAM71A. Synthetic peptide located within the following region: PGSSRHRDSHKGVSHTPISKESRTSHKSGRSLWTTSSGSSKGLGRVSSFL
Formulation:	Liquid. Purified antibody supplied in 1x PBS buffer with 0.09% (w/v) sodium azide and 2% sucrose.
Purification:	Affinity Purified
Conjugation:	Unconjugated
Storage:	Store at -20°C as received.
Stability:	Stable for 12 months from date of receipt.
Predicted Protein Size:	63 kDa
Gene Name:	family with sequence similarity 71 member A
Database Link:	NP_705834 Entrez Gene 149647 Human Q8IYT1
Background:	The function of FAM71A remains unknown.
Synonyms:	RP11-338C15.4
Note:	Immunogen Sequence Homology: Pig: 100%; Human: 100%; Rabbit: 100%; Bovine: 92%; Dog: 91%; Guinea pig: 85%



[View online »](#)

Product images:



WB Suggested Anti-FAM71A Antibody Titration:
0.2-1 ug/ml; ELISA Titer: 1: 62500; Positive
Control: Jurkat cell lysate