

Product datasheet for **TA337827**

Matriptase 2 (TMPRSS6) Rabbit Polyclonal Antibody

Product data:

Product Type:	Primary Antibodies
Applications:	IHC, WB
Recommended Dilution:	WB, IHC
Reactivity:	Human
Host:	Rabbit
Isotype:	IgG
Clonality:	Polyclonal
Immunogen:	The immunogen for anti-TMPRSS6 antibody: synthetic peptide directed towards the N terminal of human TMPRSS6. Synthetic peptide located within the following region: LLWYFLGYKAEVMVSQVYSGSLRVLNRHFSQDLTRESSAFRSETAKAQK
Formulation:	Liquid. Purified antibody supplied in 1x PBS buffer with 0.09% (w/v) sodium azide and 2% sucrose. <i>Note that this product is shipped as lyophilized powder to China customers.</i>
Purification:	Affinity Purified
Conjugation:	Unconjugated
Storage:	Store at -20°C as received.
Stability:	Stable for 12 months from date of receipt.
Predicted Protein Size:	90 kDa
Gene Name:	transmembrane protease, serine 6
Database Link:	NP_705837 Entrez Gene 164656 Human Q8IU80



[View online »](#)

Background:

TMPRSS6 is a serine protease which hydrolyzes a range of proteins including type I collagen, fibronectin and fibrinogen. TMPRSS6 can also activate urokinase-type plasminogen activator with low efficiency. TMPRSS6 may play a specialized role in matrix remodeling processes in liver. TMPRSS6 is required to sense iron deficiency. Overexpression of TMPRSS6 suppresses activation of the HAMP promoter. The protein encoded by this gene is a type II transmembrane serine proteinase that is found attached to the cell surface. The encoded protein may be involved in matrix remodeling processes in the liver.

Synonyms:

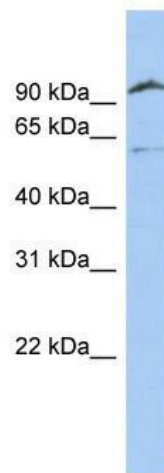
IRIDA

Note:

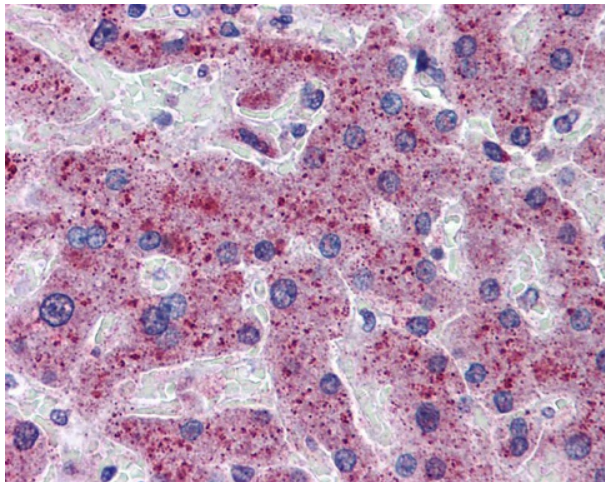
Immunogen Sequence Homology: Pig: 100%; Rat: 100%; Horse: 100%; Human: 100%; Mouse: 100%; Bovine: 100%; Dog: 93%; Guinea pig: 86%

Protein Families:

Druggable Genome, Protease, Transmembrane

Product images:


WB Suggested Anti-TMPRSS6 Antibody Titration:
0.2-1 ug/ml; ELISA Titer: 1: 312500; Positive
Control: Jurkat cell lysate



Liver