

## Product datasheet for **TA337824**

### CPNE9 Rabbit Polyclonal Antibody

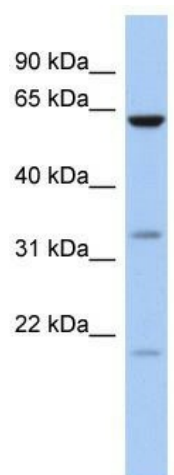
#### Product data:

Product Type:	Primary Antibodies
Applications:	WB
Recommended Dilution:	WB
Reactivity:	Human
Host:	Rabbit
Isotype:	IgG
Clonality:	Polyclonal
Immunogen:	The immunogen for anti-CPNE9 antibody: synthetic peptide directed towards the middle region of human CPNE9. Synthetic peptide located within the following region: YDRTVKIDVYDWRDGSDFIGFEFTTSYRELSKAQNQFTVYEVLNPRKKC
Formulation:	Liquid. Purified antibody supplied in 1x PBS buffer with 0.09% (w/v) sodium azide and 2% sucrose. <i>Note that this product is shipped as lyophilized powder to China customers.</i>
Purification:	Affinity Purified
Conjugation:	Unconjugated
Storage:	Store at -20°C as received.
Stability:	Stable for 12 months from date of receipt.
Predicted Protein Size:	62 kDa
Gene Name:	copine family member 9
Database Link:	<a href="#">NP_705899</a> <a href="#">Entrez Gene 151835 Human</a> <a href="#">Q8IYJ1</a>
Background:	The exact functions of CPNE9 remain unknown.
Synonyms:	KIAA4217
Note:	Immunogen Sequence Homology: Dog: 100%; Pig: 100%; Rat: 100%; Horse: 100%; Human: 100%; Mouse: 100%; Bovine: 100%; Rabbit: 100%; Guinea pig: 86%



[View online »](#)

## Product images:



WB Suggested Anti-CPNE9 Antibody Titration: 0.2-1 ug/ml; ELISA Titer: 1: 62500; Positive Control: 721\_B cell lysate