

Product datasheet for **TA337822**

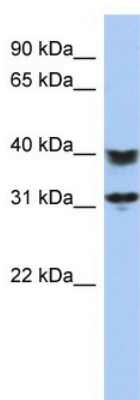
C5orf35 (SETD9) Rabbit Polyclonal Antibody

Product data:

Product Type:	Primary Antibodies
Recommended Dilution:	WB
Reactivity:	Human
Host:	Rabbit
Isotype:	IgG
Clonality:	Polyclonal
Immunogen:	The immunogen for anti-SETD9 antibody: synthetic peptide directed towards the N terminal of human SETD9. Synthetic peptide located within the following region: QSEILTMLPESVKSKYQDLLAVEHQGVKLRNRHQQSTFKPEEILYKTL
Formulation:	Liquid. Purified antibody supplied in 1x PBS buffer with 0.09% (w/v) sodium azide and 2% sucrose. <i>Note that this product is shipped as lyophilized powder to China customers.</i>
Purification:	Affinity Purified
Conjugation:	Unconjugated
Storage:	Store at -20°C as received.
Stability:	Stable for 12 months from date of receipt.
Predicted Protein Size:	34 kDa
Gene Name:	SET domain containing 9
Database Link:	NP_714917 Entrez Gene 133383 Human Q8NE22
Background:	The exact functions of C5orf35 remain unknown.
Synonyms:	C5orf35
Note:	Immunogen Sequence Homology: Human: 93%



[View online »](#)

Product images:

WB Suggested Anti-C5orf35 Antibody Titration:
0.2-1 ug/ml
ELISA Titer: 1:1562500
Positive Control: Jurkat cell lysate