

Product datasheet for **TA337820**

RTP1 Rabbit Polyclonal Antibody

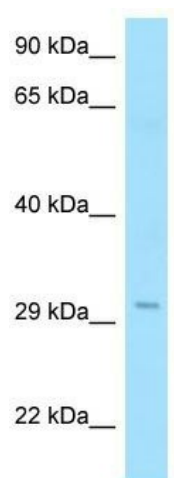
Product data:

Product Type:	Primary Antibodies
Applications:	WB
Recommended Dilution:	WB
Reactivity:	Human
Host:	Rabbit
Isotype:	IgG
Clonality:	Polyclonal
Immunogen:	The immunogen for anti-RTP1 antibody is: synthetic peptide directed towards the N-terminal region of Human RTP1. Synthetic peptide located within the following region: RWKLPSTTDETMCKSVTTDEWKKVFYEKMEEAKPADSWDLIIDPNLKHN
Formulation:	Liquid. Purified antibody supplied in 1x PBS buffer with 0.09% (w/v) sodium azide and 2% sucrose.
Purification:	Affinity Purified
Conjugation:	Unconjugated
Storage:	Store at -20°C as received.
Stability:	Stable for 12 months from date of receipt.
Predicted Protein Size:	31 kDa
Gene Name:	receptor transporter protein 1
Database Link:	NP_714919 Entrez Gene 132112 Human P59025
Background:	RTP1 specifically promotes functional cell surface expression of olfactory receptors, but not of other GPCRs.
Synonyms:	Z3CXXC1
Note:	Immunogen Sequence Homology: Dog: 100%; Pig: 100%; Rat: 100%; Horse: 100%; Human: 100%; Rabbit: 100%; Guinea pig: 100%; Mouse: 93%; Bovine: 93%
Protein Families:	Druggable Genome, Transmembrane



[View online »](#)

Product images:



WB Suggested Anti-RTP1 Antibody; Titration: 1.0 ug/ml; Positive Control: Fetal Heart