

Product datasheet for **TA337818**

TTL Rabbit Polyclonal Antibody

Product data:

Product Type:	Primary Antibodies
Applications:	WB
Recommended Dilution:	WB
Reactivity:	Human
Host:	Rabbit
Isotype:	IgG
Clonality:	Polyclonal
Immunogen:	The immunogen for anti-TTL antibody: synthetic peptide directed towards the middle region of human TTL. Synthetic peptide located within the following region: LYREGVLR TASEPYHVDNFQDKTCHLTNHCIQKEYSKNYGKYEEGNEMFF
Formulation:	Liquid. Purified antibody supplied in 1x PBS buffer with 0.09% (w/v) sodium azide and 2% sucrose. <i>Note that this product is shipped as lyophilized powder to China customers.</i>
Purification:	Affinity Purified
Conjugation:	Unconjugated
Storage:	Store at -20°C as received.
Stability:	Stable for 12 months from date of receipt.
Predicted Protein Size:	43 kDa
Gene Name:	tubulin tyrosine ligase
Database Link:	NP_714923 Entrez Gene 150465 Human Q8NG68
Background:	TTL catalyzes the post-translational addition of a tyrosine to the C-terminal end of dephosphorylated alpha-tubulin. TTL is a cytosolic enzyme involved in the posttranslational modification of alpha-tubulin (see MIM 602529). Alpha-tubulin within assembled microtubules is dephosphorylated over time at the C terminus. After microtubule disassembly, TTL restores the tyrosine residues and consequently participates in a cycle of tubulin dephosphorylation and tyrosination (Erck et al., 2003 [PubMed 14571137]). [supplied by OMIM]

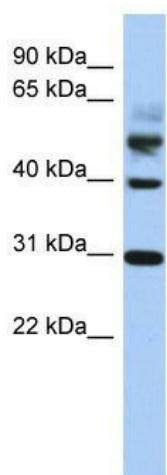


[View online »](#)

Synonyms: MGC46235

Note: Immunogen Sequence Homology: Dog: 100%; Pig: 100%; Rat: 100%; Horse: 100%; Human: 100%; Mouse: 100%; Bovine: 100%; Rabbit: 100%; Guinea pig: 100%; Zebrafish: 79%

Product images:



WB Suggested Anti-TTL Antibody Titration: 0.2-1 ug/ml; ELISA Titer: 1: 1562500; Positive Control: Human Lung