

Product datasheet for **TA337817**

LIX1L Rabbit Polyclonal Antibody

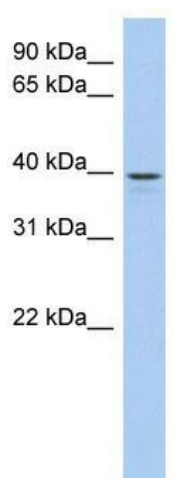
Product data:

Product Type:	Primary Antibodies
Applications:	WB
Recommended Dilution:	WB
Reactivity:	Human
Host:	Rabbit
Isotype:	IgG
Clonality:	Polyclonal
Immunogen:	The immunogen for anti-LIX1L antibody: synthetic peptide directed towards the N terminal of human LIX1L. Synthetic peptide located within the following region: AGSPAVLREAVEAVVRSFAKHTQGYGRVNVVEALQEFWQMKQSRGADLKN
Formulation:	Liquid. Purified antibody supplied in 1x PBS buffer with 0.09% (w/v) sodium azide and 2% sucrose. <i>Note that this product is shipped as lyophilized powder to China customers.</i>
Purification:	Affinity Purified
Conjugation:	Unconjugated
Storage:	Store at -20°C as received.
Stability:	Stable for 12 months from date of receipt.
Predicted Protein Size:	36 kDa
Gene Name:	limb and CNS expressed 1 like
Database Link:	NP_714924 Entrez Gene 128077 Human Q8IVB5
Background:	The exact functions of LIX1L remain unknown.
Synonyms:	DKFZp762F237; MGC46719
Note:	Immunogen Sequence Homology: Dog: 100%; Pig: 100%; Rat: 100%; Human: 100%; Mouse: 100%; Bovine: 100%; Rabbit: 100%; Zebrafish: 100%; Guinea pig: 100%



[View online »](#)

Product images:



WB Suggested Anti-LIX1L Antibody Titration: 0.2-1 ug/ml; ELISA Titer: 1: 1562500; Positive Control: Human Lung