

## Product datasheet for **TA337816**

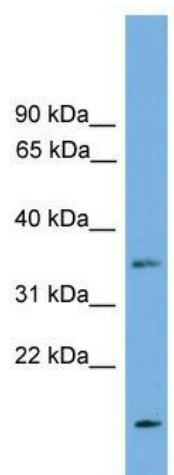
### LIX1L Rabbit Polyclonal Antibody

#### Product data:

Product Type:	Primary Antibodies
Applications:	WB
Recommended Dilution:	WB
Reactivity:	Human
Host:	Rabbit
Isotype:	IgG
Clonality:	Polyclonal
Immunogen:	The immunogen for anti-LIX1L antibody: synthetic peptide directed towards the N terminal of human LIX1L. Synthetic peptide located within the following region: METMRAQRLQPGVGTSGRGTLRALRPGVTGAAAATATPPAGPPPAPPPPA
Formulation:	Liquid. Purified antibody supplied in 1x PBS buffer with 0.09% (w/v) sodium azide and 2% sucrose. <i>Note that this product is shipped as lyophilized powder to China customers.</i>
Purification:	Affinity Purified
Conjugation:	Unconjugated
Storage:	Store at -20°C as received.
Stability:	Stable for 12 months from date of receipt.
Predicted Protein Size:	36 kDa
Gene Name:	limb and CNS expressed 1 like
Database Link:	<a href="#">NP_714924</a> <a href="#">Entrez Gene 128077 Human</a> <a href="#">Q8IVB5</a>
Background:	The exact functions of LIX1L remain unknown.
Synonyms:	DKFZp762F237; MGC46719
Note:	Immunogen Sequence Homology: Pig: 100%; Horse: 100%; Human: 100%; Bovine: 100%; Rabbit: 93%; Guinea pig: 93%; Dog: 86%; Rat: 86%; Mouse: 86%



[View online »](#)

**Product images:**

WB Suggested Anti-LIX1L Antibody Titration: 0.2-1 ug/ml; Positive Control: Jurkat cell lysate