

Product datasheet for **TA337812**

CREG2 Rabbit Polyclonal Antibody

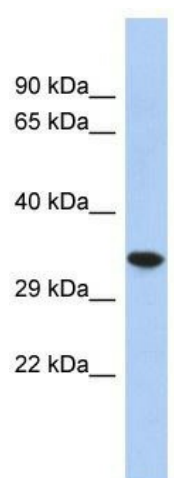
Product data:

Product Type:	Primary Antibodies
Applications:	WB
Recommended Dilution:	WB
Reactivity:	Human
Host:	Rabbit
Isotype:	IgG
Clonality:	Polyclonal
Immunogen:	The immunogen for anti-CREG2 antibody: synthetic peptide directed towards the N terminal of human CREG2. Synthetic peptide located within the following region: VSSVSWAVTNEVDEELDSASTEEAMPALLEDSGSIWQQSFPASAHKEDAH
Formulation:	Liquid. Purified antibody supplied in 1x PBS buffer with 0.09% (w/v) sodium azide and 2% sucrose.
Purification:	Affinity Purified
Conjugation:	Unconjugated
Storage:	Store at -20°C as received.
Stability:	Stable for 12 months from date of receipt.
Predicted Protein Size:	32 kDa
Gene Name:	cellular repressor of E1A stimulated genes 2
Database Link:	NP_722578 Entrez Gene 200407 Human Q8IUH2
Background:	The exact functions of CREG2 remain unknown.
Synonyms:	cellular repressor of E1A-stimulated genes 2
Note:	Immunogen Sequence Homology: Pig: 100%; Rat: 100%; Human: 100%; Mouse: 100%; Bovine: 93%; Guinea pig: 93%
Protein Families:	Secreted Protein



[View online »](#)

Product images:



WB Suggested Anti-CREG2 Antibody Titration: 0.2-1 ug/ml; ELISA Titer: 1: 12500; Positive Control: 293T cell lysate