

Product datasheet for **TA337811**

NSP3 (SH2D3C) Rabbit Polyclonal Antibody

Product data:

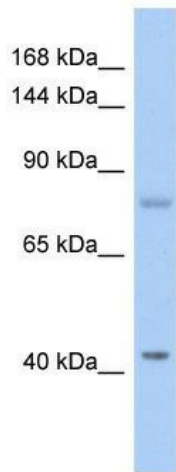
Product Type:	Primary Antibodies
Applications:	WB
Recommended Dilution:	WB
Reactivity:	Human
Host:	Rabbit
Isotype:	IgG
Clonality:	Polyclonal
Immunogen:	The immunogen for anti-SH2D3C antibody: synthetic peptide directed towards the N terminal of human SH2D3C. Synthetic peptide located within the following region: AGSDYVKFSKEKYILDSSPEKLHKELEEELKLSSTDLRSHAWYHGRIPRE
Formulation:	Liquid. Purified antibody supplied in 1x PBS buffer with 0.09% (w/v) sodium azide and 2% sucrose. <i>Note that this product is shipped as lyophilized powder to China customers.</i>
Purification:	Affinity Purified
Conjugation:	Unconjugated
Storage:	Store at -20°C as received.
Stability:	Stable for 12 months from date of receipt.
Predicted Protein Size:	77 kDa
Gene Name:	SH2 domain containing 3C
Database Link:	NP_733745 Entrez Gene 10044 Human Q8N5H7
Background:	SH2D3C is an Eph receptor-binding protein which may be a positive regulator of TCR signaling. Binding to BCAR1 of SH2D3C is required to induce membrane ruffling and promote EGF-dependent cell migration.
Synonyms:	CHAT; NSP3; PRO34088; SHEP1
Note:	Immunogen Sequence Homology: Dog: 100%; Pig: 100%; Rat: 100%; Human: 100%; Mouse: 100%; Bovine: 100%; Rabbit: 100%; Guinea pig: 100%; Horse: 93%; Zebrafish: 79%



[View online »](#)

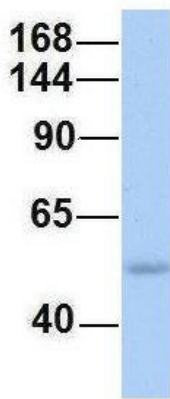
Protein Families: Druggable Genome

Product images:



WB Suggested Anti-SH2D3C Antibody Titration:
0.2-1 ug/ml; ELISA Titer: 1: 1562500; Positive
Control: Jurkat cell lysate

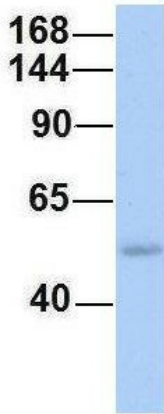
SH2D3C



Rabbit Anti-SH2D3C
Sample Type: Human Adult
Placenta
Antibody Concentration: 1ug/mL

Host: Rabbit; Target Name: SH2D3C; Sample
Tissue: Human Adult Placenta; Antibody Dilution:
1.0 ug/ml

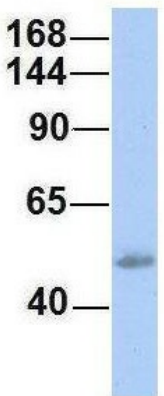
SH2D3C



Rabbit Anti-SH2D3C
Sample Type: Human Adult Placenta
Antibody Concentration: 1ug/mL

Host: Rabbit; Target Name: SH2D3C; Sample Tissue: Human Adult Placenta; Antibody Dilution: 1.0 ug/ml

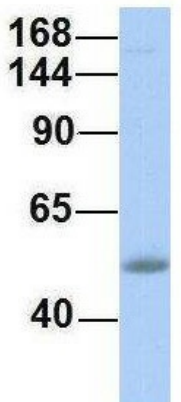
SH2D3C



Rabbit Anti-SH2D3C
Sample Type: Human Fetal Lung
Antibody Concentration: 1ug/mL

Host: Rabbit; Target Name: SH2D3C; Sample Tissue: Human Fetal Lung; Antibody Dilution: 1.0 ug/ml

SH2D3C



Rabbit Anti-SH2D3C
Sample Type: Human Fetal Muscle
Antibody Concentration: 1ug/mL

Host: Rabbit; Target Name: SH2D3C; Sample Tissue: Human Fetal Muscle; Antibody Dilution: 1.0 ug/ml