

Product datasheet for **TA337810**

NLRX1 Rabbit Polyclonal Antibody

Product data:

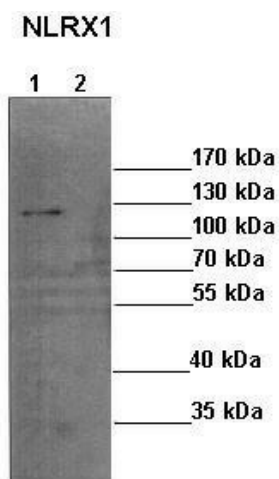
Product Type:	Primary Antibodies
Applications:	WB
Recommended Dilution:	WB
Reactivity:	Mouse
Host:	Rabbit
Isotype:	IgG
Clonality:	Polyclonal
Immunogen:	The immunogen for anti-NLRX1 antibody is: synthetic peptide directed towards the N-terminal region of Human NLRX1. Synthetic peptide located within the following region: GSHLLFVLHGLEHLNLDLFRAGTGLCSDPEEPQEPAAIIVNLLRKYMLPQ
Formulation:	Liquid. Purified antibody supplied in 1x PBS buffer with 0.09% (w/v) sodium azide and 2% sucrose. <i>Note that this product is shipped as lyophilized powder to China customers.</i>
Purification:	Affinity Purified
Conjugation:	Unconjugated
Storage:	Store at -20°C as received.
Stability:	Stable for 12 months from date of receipt.
Predicted Protein Size:	101 kDa
Gene Name:	NLR family member X1
Database Link:	NP_733840 Entrez Gene 270151 Mouse Q86UT6
Background:	This gene encodes a member of the NLR family. Alternative splicing has been observed at this gene locus and two transcript variants, encoding distinct isoforms, have been identified.
Synonyms:	CLR11.3; DLNB26; NOD5; NOD9; NOD26
Note:	Immunogen Sequence Homology: Human: 100%; Rat: 86%; Horse: 86%; Mouse: 86%; Dog: 79%; Pig: 79%; Bovine: 79%; Rabbit: 79%; Guinea pig: 79%



[View online »](#)

Protein Pathways: RIG-I-like receptor signaling pathway

Product images:



Sample Type : Lane 1: 35ug mouse neuroblastoma cells w/ empty vector Lane 2: 35ug mouse neuroblastoma cells w/ NLRX1 siRNA
Primary Antibody Dilution : 1:1000 Secondary Antibody: Anti-rabbit-HRP Secondary Antibody Dilution: 1:1000 Color/Signal Descriptions