

## Product datasheet for **TA337807**

### CLECL1 Rabbit Polyclonal Antibody

#### Product data:

|                         |  |
|-------------------------|--|
| Product Type:           | Primary Antibodies   |
| Applications:           | WB   |
| Recommended Dilution:   | WB   |
| Reactivity:             | Human  |
| Host:                   | Rabbit   |
| Isotype:                | IgG  |
| Clonality:              | Polyclonal   |
| Immunogen:              | The immunogen for anti-CLECL1 antibody: synthetic peptide directed towards the middle region of human CLECL1. Synthetic peptide located within the following region:<br>FSLFLICAMAGDVVYADIKTVRTSPLELAFPLQRSVSFNFSTVHKSCPAK |
| Formulation:            | Liquid. Purified antibody supplied in 1x PBS buffer with 0.09% (w/v) sodium azide and 2% sucrose.<br><i>Note that this product is shipped as lyophilized powder to China customers.</i>                                    |
| Purification:           | Affinity Purified  |
| Conjugation:            | Unconjugated   |
| Storage:                | Store at -20°C as received.  |
| Stability:              | Stable for 12 months from date of receipt.   |
| Predicted Protein Size: | 19 kDa   |
| Gene Name:              | C-type lectin like 1   |
| Database Link:          | <a href="#">NP_742001</a><br><a href="#">Entrez Gene 160365 Human</a><br><a href="#">Q8IZS7</a>  |



[View online »](#)

**Background:**

DCAL1 is a type II transmembrane, C-type lectin-like protein expressed on dendritic cells (DCs) and B cells. It interacts with subsets of T cells as a costimulatory molecule that enhances interleukin-4 (IL4; MIM 147780) production. DCAL1 is a type II transmembrane, C-type lectin-like protein expressed on dendritic cells (DCs) and B cells. It interacts with subsets of T cells as a costimulatory molecule that enhances interleukin-4 (IL4; MIM 147780) production. [supplied by OMIM]. PRIMARYREFSEQ\_SPAN PRIMARY\_IDENTIFIER PRIMARY\_SPAN COMP 1-504 AF518873.1 1-504 505-649 AW237307.1 1-145 c

**Synonyms:**

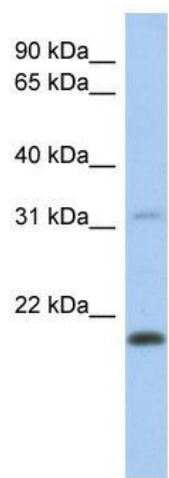
DCAL-1; DCAL1

**Note:**

Immunogen Sequence Homology: Human: 100%

**Protein Families:**

Druggable Genome

**Product images:**

WB Suggested Anti-CLECL1 Antibody Titration:  
0.2-1 ug/ml; ELISA Titer: 1: 12500; Positive  
Control: Human Placenta