

Product datasheet for **TA337803**

RDH10 Rabbit Polyclonal Antibody

Product data:

Product Type:	Primary Antibodies
Applications:	WB
Recommended Dilution:	WB
Reactivity:	Human
Host:	Rabbit
Isotype:	IgG
Clonality:	Polyclonal
Immunogen:	The immunogen for anti-RDH10 antibody: synthetic peptide directed towards the N terminal of human RDH10. Synthetic peptide located within the following region: QSNEETAGMVRHIYRDLEAADAALQAGNGEEEEILPHCNLQVFTYTCDVG
Formulation:	Liquid. Purified antibody supplied in 1x PBS buffer with 0.09% (w/v) sodium azide and 2% sucrose. <i>Note that this product is shipped as lyophilized powder to China customers.</i>
Purification:	Affinity Purified
Conjugation:	Unconjugated
Storage:	Store at -20°C as received.
Stability:	Stable for 12 months from date of receipt.
Predicted Protein Size:	38 kDa
Gene Name:	retinol dehydrogenase 10 (all-trans)
Database Link:	NP_742034 Entrez Gene 157506 Human Q8IZV5
Background:	RDH10 is a retinol dehydrogenase with a clear preference for NADP. RDH10 converts all-trans-retinol to all-trans-retinal. RDH10 has no detectable activity towards 11-cis-retinol, 9-cis-retinol and 13-cis-retinol. RDH10 generates all-trans retinal from all-trans retinol and may play an important role in the photic visual cycle. All-trans retinal is isomerized to 11-cis retinal by the retinal G protein-coupled receptor (RGR; MIM 600342) when the retinal pigment epithelium (RPE) is illuminated. [supplied by OMIM]



[View online »](#)

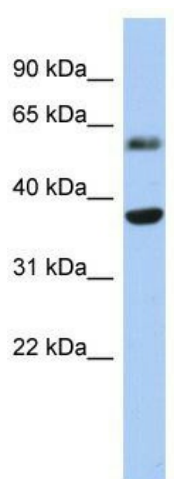
Synonyms: SDR16C4

Note: Immunogen Sequence Homology: Dog: 100%; Pig: 100%; Rat: 100%; Horse: 100%; Human: 100%; Mouse: 100%; Bovine: 100%; Rabbit: 100%; Guinea pig: 100%

Protein Families: Druggable Genome, Transmembrane

Protein Pathways: Metabolic pathways, Retinol metabolism

Product images:



WB Suggested Anti-RDH10 Antibody Titration:
0.2-1 ug/ml; ELISA Titer: 1: 312500; Positive
Control: Human heart