

Product datasheet for **TA337802**

PLEKHH2 Rabbit Polyclonal Antibody

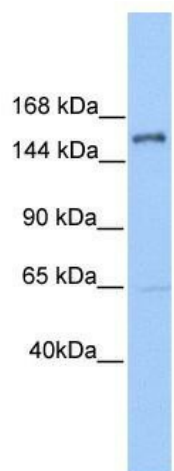
Product data:

Product Type:	Primary Antibodies
Applications:	IHC, WB
Recommended Dilution:	WB, IHC
Reactivity:	Human
Host:	Rabbit
Isotype:	IgG
Clonality:	Polyclonal
Immunogen:	The immunogen for anti-PLEKHH2 antibody: synthetic peptide directed towards the C terminal of human PLEKHH2. Synthetic peptide located within the following region: WQLLALCVGLFLPHHPFLWLLRLHLKRNADSRTEFGKYAIYCQRCVERTQ
Formulation:	Liquid. Purified antibody supplied in 1x PBS buffer with 0.09% (w/v) sodium azide and 2% sucrose. <i>Note that this product is shipped as lyophilized powder to China customers.</i>
Purification:	Affinity Purified
Conjugation:	Unconjugated
Storage:	Store at -20°C as received.
Stability:	Stable for 12 months from date of receipt.
Predicted Protein Size:	168 kDa
Gene Name:	pleckstrin homology, MyTH4 and FERM domain containing H2
Database Link:	NP_742066 Entrez Gene 130271 Human Q8IVE3
Background:	PLEKHH2 contains 1 FERM domain, 1 MyTH4 domain and 2 PH domains. It is a Single-pass membrane protein. The exact function of PLEKHH2 remains unknown.
Synonyms:	PLEKHH1L
Note:	Immunogen Sequence Homology: Dog: 100%; Pig: 100%; Rat: 100%; Horse: 100%; Human: 100%; Mouse: 100%; Bovine: 100%; Rabbit: 100%; Guinea pig: 100%; Zebrafish: 79%

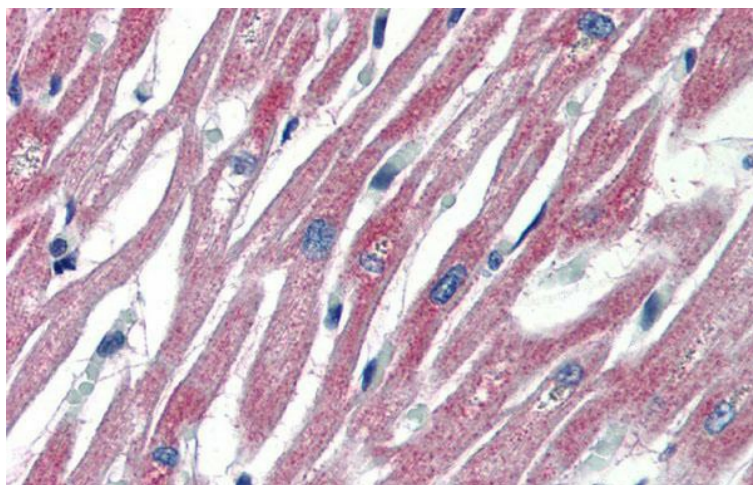


[View online »](#)

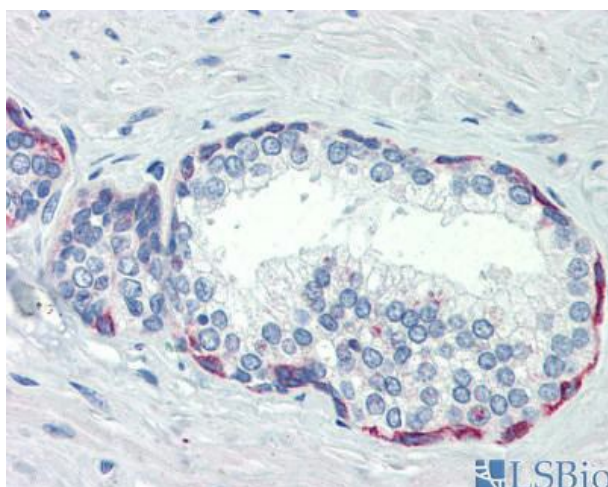
Product images:



WB Suggested Anti-PLEKHH2 Antibody Titration:
1 ug/ml; Positive Control: Jurkat cell lysate



Human Heart



Human Prostate