

Product datasheet for **TA337801**

KLHDC1 Rabbit Polyclonal Antibody

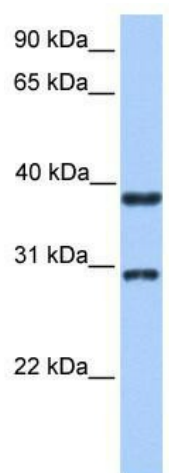
Product data:

Product Type:	Primary Antibodies
Applications:	WB
Recommended Dilution:	WB
Reactivity:	Human
Host:	Rabbit
Isotype:	IgG
Clonality:	Polyclonal
Immunogen:	The immunogen for anti-KLHDC1 antibody: synthetic peptide directed towards the N terminal of human KLHDC1. Synthetic peptide located within the following region: IDSGLWRMHLMEGELPASMMSGSCGACINGKLYIFGGYDDKGYSNRLYFVN
Formulation:	Liquid. Purified antibody supplied in 1x PBS buffer with 0.09% (w/v) sodium azide and 2% sucrose. <i>Note that this product is shipped as lyophilized powder to China customers.</i>
Purification:	Affinity Purified
Conjugation:	Unconjugated
Storage:	Store at -20°C as received.
Stability:	Stable for 12 months from date of receipt.
Predicted Protein Size:	47 kDa
Gene Name:	kelch domain containing 1
Database Link:	NP_751943 Entrez Gene 122773 Human Q8N7A1
Background:	KLHDC1 contains 6 Kelch repeats. KLHDC1 and KLHDC2 have differential localization and activity in cultured mammalian cells. The exact function of KLHDC1 remains unknown.
Synonyms:	MST025
Note:	Immunogen Sequence Homology: Dog: 100%; Rat: 100%; Horse: 100%; Human: 100%; Mouse: 100%; Bovine: 100%; Pig: 93%; Rabbit: 93%



[View online »](#)

Product images:



WB Suggested Anti-KLHDC1 Antibody Titration:
0.2-1 ug/ml; Positive Control: Hela cell lysate