

Product datasheet for **TA337800**

CACNA2D4 Rabbit Polyclonal Antibody

Product data:

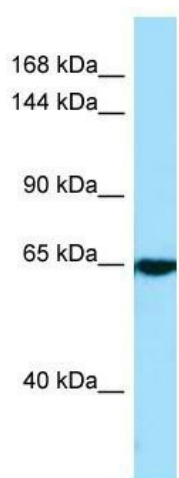
Product Type:	Primary Antibodies
Applications:	WB
Recommended Dilution:	WB
Reactivity:	Human
Host:	Rabbit
Isotype:	IgG
Clonality:	Polyclonal
Immunogen:	The immunogen for anti-CACNA2D4 antibody is: synthetic peptide directed towards the middle region of Human CACNA2D4. Synthetic peptide located within the following region: ADLNHEFNESLVFDYNSVLINERDEKGNFVELGAEFLLESNAHFSNLPV
Formulation:	Liquid. Purified antibody supplied in 1x PBS buffer with 0.09% (w/v) sodium azide and 2% sucrose. <i>Note that this product is shipped as lyophilized powder to China customers.</i>
Purification:	Affinity Purified
Conjugation:	Unconjugated
Storage:	Store at -20°C as received.
Stability:	Stable for 12 months from date of receipt.
Predicted Protein Size:	66 kDa
Gene Name:	calcium voltage-gated channel auxiliary subunit alpha2delta 4
Database Link:	NP_758952 Entrez Gene 93589 Human Q7Z3S7
Background:	The function of this protein remains unknown.
Synonyms:	RCD4
Note:	Immunogen Sequence Homology: Dog: 100%; Pig: 100%; Rat: 100%; Horse: 100%; Human: 100%; Mouse: 100%; Rabbit: 100%; Guinea pig: 100%
Protein Families:	Druggable Genome, Ion Channels: Other



[View online »](#)

Protein Pathways: Arrhythmogenic right ventricular cardiomyopathy (ARVC), Cardiac muscle contraction, Dilated cardiomyopathy, Hypertrophic cardiomyopathy (HCM), MAPK signaling pathway

Product images:



Host: Rabbit; Target Name: CACNA2D4; Sample
Tissue: A549 Whole Cell lysates; Antibody
Dilution: 1.0 ug/ml