

Product datasheet for **TA337797**

SCUBE1 Rabbit Polyclonal Antibody

Product data:

Product Type:	Primary Antibodies
Applications:	WB
Recommended Dilution:	WB
Reactivity:	Human
Host:	Rabbit
Isotype:	IgG
Clonality:	Polyclonal
Immunogen:	The immunogen for anti-SCUBE1 antibody is: synthetic peptide directed towards the N-terminal region of Human SCUBE1. Synthetic peptide located within the following region: PGYKGEKQCEDIDECENDYNGGCVHECINIPGNRYRCTCFDGFMLAHDG
Formulation:	Liquid. Purified antibody supplied in 1x PBS buffer with 0.09% (w/v) sodium azide and 2% sucrose. <i>Note that this product is shipped as lyophilized powder to China customers.</i>
Purification:	Affinity Purified
Conjugation:	Unconjugated
Storage:	Store at -20°C as received.
Stability:	Stable for 12 months from date of receipt.
Predicted Protein Size:	38 kDa
Gene Name:	signal peptide, CUB domain and EGF like domain containing 1
Database Link:	NP_766638 Entrez Gene 80274 Human Q8IWIY4
Background:	This gene encodes a cell surface glycoprotein that is a member of the SCUBE (signal peptide, CUB domain, EGF (epidermal growth factor)-like protein) family. Family members have an amino-terminal signal peptide, nine copies of EGF-like repeats and a CUB domain at the carboxyl terminus. This protein is expressed in platelets and endothelial cells and may play an important role in vascular biology.
Synonyms:	SCUBE1

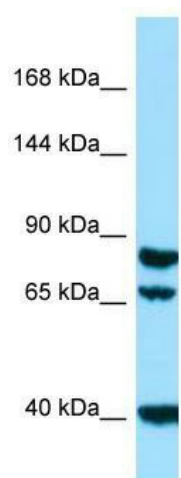


[View online »](#)

Note: Immunogen Sequence Homology: Rat: 100%; Human: 100%; Dog: 93%; Pig: 93%; Horse: 93%; Mouse: 93%; Bovine: 93%; Rabbit: 93%; Guinea pig: 93%; Zebrafish: 86%

Protein Families: Druggable Genome, Secreted Protein

Product images:



Host: Rabbit; Target Name: SCUBE1; Sample Tissue: HepG2 Whole Cell lysates; Antibody Dilution: 1.0 ug/ml