

Product datasheet for **TA337795**

COL23A1 Rabbit Polyclonal Antibody

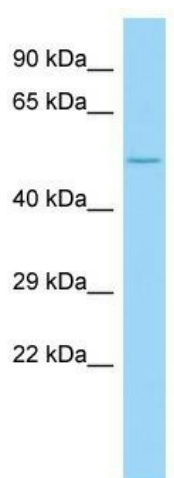
Product data:

Product Type:	Primary Antibodies
Applications:	WB
Recommended Dilution:	WB
Reactivity:	Human
Host:	Rabbit
Isotype:	IgG
Clonality:	Polyclonal
Immunogen:	The immunogen for anti-COL23A1 antibody is: synthetic peptide directed towards the C-terminal region of Human COL23A1. Synthetic peptide located within the following region: GLIGLPGTKGEKGRPGEPGLDGFPGPRGEKGDRSERGEKGERGVPRKGV
Formulation:	Liquid. Purified antibody supplied in 1x PBS buffer with 0.09% (w/v) sodium azide and 2% sucrose. <i>Note that this product is shipped as lyophilized powder to China customers.</i>
Purification:	Affinity Purified
Conjugation:	Unconjugated
Storage:	Store at -20°C as received.
Stability:	Stable for 12 months from date of receipt.
Predicted Protein Size:	52 kDa
Gene Name:	collagen type XXIII alpha 1 chain
Database Link:	NP_775736 Entrez Gene 91522 Human Q86Y22
Background:	COL23A1 is a member of the transmembrane collagens, a subfamily of the nonfibrillar collagens that contain a single pass hydrophobic transmembrane domain.
Synonyms:	DKFZp434K0621
Note:	Immunogen Sequence Homology: Dog: 100%; Pig: 100%; Rat: 100%; Horse: 100%; Human: 100%; Mouse: 100%; Bovine: 100%; Rabbit: 100%; Guinea pig: 100%; Zebrafish: 86%



[View online »](#)

Product images:



WB Suggested Anti-COL23A1 Antibody; Titration:
1.0 ug/ml; Positive Control: Fetal Liver