

Product datasheet for **TA337794**

UBE2Q2 Rabbit Polyclonal Antibody

Product data:

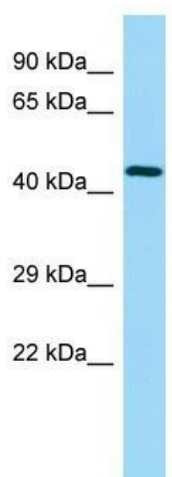
Product Type:	Primary Antibodies
Applications:	WB
Recommended Dilution:	WB
Reactivity:	Human
Host:	Rabbit
Isotype:	IgG
Clonality:	Polyclonal
Immunogen:	The immunogen for anti-UBE2Q2 antibody is: synthetic peptide directed towards the middle region of Human UBE2Q2. Synthetic peptide located within the following region: EDIEDLDHYEMKEEPISGKKSEDEGIEKENLAILEKIRKTQRQDHLNGA
Formulation:	Liquid. Purified antibody supplied in 1x PBS buffer with 0.09% (w/v) sodium azide and 2% sucrose. <i>Note that this product is shipped as lyophilized powder to China customers.</i>
Purification:	Affinity Purified
Conjugation:	Unconjugated
Storage:	Store at -20°C as received.
Stability:	Stable for 12 months from date of receipt.
Predicted Protein Size:	43 kDa
Gene Name:	ubiquitin conjugating enzyme E2 Q2
Database Link:	NP_775740 Entrez Gene 92912 Human Q8WVN8
Background:	UBE2Q2 accepts ubiquitin from the E1 complex and catalyzes its covalent attachment to other proteins. In vitro UBE2Q2 catalyzes 'Lys-48'-linked polyubiquitination.
Synonyms:	DKFZp762C143
Note:	Immunogen Sequence Homology: Dog: 100%; Pig: 100%; Rat: 100%; Horse: 100%; Human: 100%; Mouse: 100%; Bovine: 100%; Rabbit: 100%; Guinea pig: 93%; Zebrafish: 92%



[View online »](#)

Protein Pathways: Ubiquitin mediated proteolysis

Product images:



WB Suggested Anti-UBE2Q2 Antibody; Titration:
1.0 ug/ml; Positive Control: Fetal Heart