

Product datasheet for **TA337791**

DCUN1D3 Rabbit Polyclonal Antibody

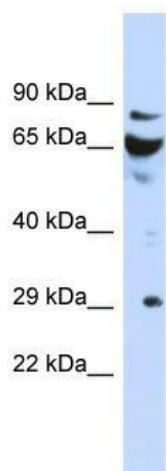
Product data:

Product Type:	Primary Antibodies
Applications:	WB
Recommended Dilution:	WB
Reactivity:	Human
Host:	Rabbit
Isotype:	IgG
Clonality:	Polyclonal
Immunogen:	The immunogen for anti-DCUN1D3 antibody: synthetic peptide directed towards the N terminal of human DCUN1D3. Synthetic peptide located within the following region: GHREEQVPPCGKPGGDILVNGTKKAEAAATEACQLPTSSGDAGRESKSNAE
Formulation:	Liquid. Purified antibody supplied in 1x PBS buffer with 0.09% (w/v) sodium azide and 2% sucrose. <i>Note that this product is shipped as lyophilized powder to China customers.</i>
Purification:	Affinity Purified
Conjugation:	Unconjugated
Storage:	Store at -20°C as received.
Stability:	Stable for 12 months from date of receipt.
Predicted Protein Size:	34 kDa
Gene Name:	defective in cullin neddylation 1 domain containing 3
Database Link:	NP_775746 Entrez Gene 123879 Human Q8IWE4
Background:	DCUN1D3 contains 1 DCUN1 domain. The exact function of DCUN1D3 remains unknown.
Synonyms:	44M2.4; SCCRO3
Note:	Immunogen Sequence Homology: Pig: 100%; Rat: 100%; Human: 100%; Mouse: 100%; Guinea pig: 100%; Dog: 93%; Horse: 93%; Bovine: 93%



[View online »](#)

Product images:



WB Suggested Anti-DCUN1D3 Antibody Titration:
0.2-1 ug/ml; ELISA Titer: 1: 1562500; Positive
Control: Human kidney