

## Product datasheet for **TA337790**

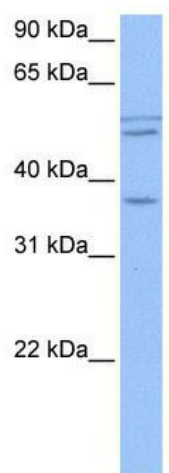
### CCDC78 Rabbit Polyclonal Antibody

#### Product data:

Product Type:	Primary Antibodies
Applications:	WB
Recommended Dilution:	WB
Reactivity:	Human
Host:	Rabbit
Isotype:	IgG
Clonality:	Polyclonal
Immunogen:	The immunogen for anti-CCDC78 antibody: synthetic peptide directed towards the middle region of human CCDC78. Synthetic peptide located within the following region: QELRHKAQVPGHSDDHFRFQVQPKNTMDPENEQHRLGSGVSVQPPSSGERA
Formulation:	Liquid. Purified antibody supplied in 1x PBS buffer with 0.09% (w/v) sodium azide and 2% sucrose. <i>Note that this product is shipped as lyophilized powder to China customers.</i>
Purification:	Affinity Purified
Conjugation:	Unconjugated
Storage:	Store at -20°C as received.
Stability:	Stable for 12 months from date of receipt.
Predicted Protein Size:	37 kDa
Gene Name:	coiled-coil domain containing 78
Database Link:	<a href="#">NP_775747</a> <a href="#">Entrez Gene 124093 Human</a> <a href="#">A2IDD5</a>
Background:	The exact function of CCDC78 remains unknown.
Synonyms:	C16orf25; coiled-coil domain containing 78; FLJ34512; JFP10; LA16c-444G9.2
Note:	Immunogen Sequence Homology: Human: 93%



[View online »](#)

**Product images:**

WB Suggested Anti-CCDC78 Antibody Titration:  
0.2-1 ug/ml; Positive Control: HepG2 cell lysate