

Product datasheet for **TA337786**

PIP5KL1 Rabbit Polyclonal Antibody

Product data:

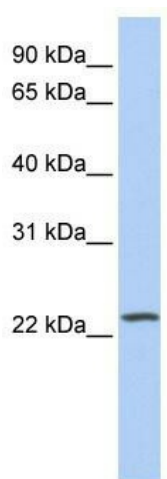
Product Type:	Primary Antibodies
Applications:	WB
Recommended Dilution:	WB
Reactivity:	Human
Host:	Rabbit
Isotype:	IgG
Clonality:	Polyclonal
Immunogen:	The immunogen for anti-PIP5KL1 antibody: synthetic peptide directed towards the middle region of human PIP5KL1. Synthetic peptide located within the following region: VLDYSLLIAFQRLHEDERGPSSLI FRTARSVQGAQSPEESRAQNRLLP
Formulation:	Liquid. Purified antibody supplied in 1x PBS buffer with 0.09% (w/v) sodium azide and 2% sucrose.
Purification:	Affinity Purified
Conjugation:	Unconjugated
Storage:	Store at -20°C as received.
Stability:	Stable for 12 months from date of receipt.
Predicted Protein Size:	22 kDa
Gene Name:	phosphatidylinositol-4-phosphate 5-kinase like 1
Database Link:	NP_775763 Entrez Gene 138429 Human Q5T9C9
Background:	PIP5KL1 may act as a scaffold to localize and regulate type I PI(4)P 5-kinases to specific compartments within the cell, where they generate PI(4,5)P2 for actin nucleation, signaling and scaffold protein recruitment and conversion to PI(3,4,5)P3.
Synonyms:	bA203J24.5; PIPKH
Note:	Immunogen Sequence Homology: Human: 100%; Rabbit: 100%; Dog: 92%; Pig: 85%; Horse: 79%; Bovine: 79%



[View online »](#)

Protein Families: Druggable Genome

Product images:



WB Suggested Anti-PIP5KL1 Antibody Titration:
0.2-1 ug/ml; Positive Control: Human Lung