

Product datasheet for **TA337784**

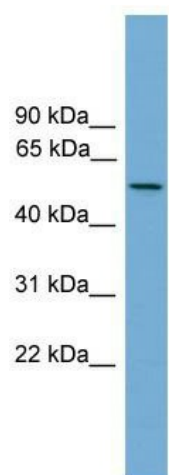
EFCAB3 Rabbit Polyclonal Antibody

Product data:

Product Type:	Primary Antibodies
Applications:	WB
Recommended Dilution:	WB
Reactivity:	Human
Host:	Rabbit
Isotype:	IgG
Clonality:	Polyclonal
Immunogen:	The immunogen for anti-EFCAB3 antibody: synthetic peptide directed towards the N terminal of human EFCAB3. Synthetic peptide located within the following region: MAVSEIKPKLKLNPLTKVPISHNKRDRDLPGSLQCQLQHKEKKLSASQMA
Formulation:	Liquid. Purified antibody supplied in 1x PBS buffer with 0.09% (w/v) sodium azide and 2% sucrose. <i>Note that this product is shipped as lyophilized powder to China customers.</i>
Purification:	Affinity Purified
Conjugation:	Unconjugated
Storage:	Store at -20°C as received.
Stability:	Stable for 12 months from date of receipt.
Predicted Protein Size:	50 kDa
Gene Name:	EF-hand calcium binding domain 3
Database Link:	NP_775774 Entrez Gene 146779 Human Q8N7B9
Background:	The function of the protein remains unknown.
Synonyms:	FLJ25818; MGC126801; MGC126827
Note:	Immunogen Sequence Homology: Human: 100%; Rat: 77%



[View online »](#)

Product images:

WB Suggested Anti-EFCAB3 Antibody Titration:
0.2-1 ug/ml; ELISA Titer: 1: 1562500; Positive
Control: NCI-H226 cell lysate