

Product datasheet for **TA337783**

CCDC117 Rabbit Polyclonal Antibody

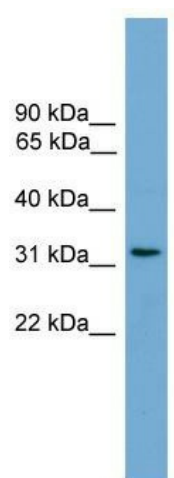
Product data:

Product Type:	Primary Antibodies
Applications:	WB
Recommended Dilution:	WB
Reactivity:	Human
Host:	Rabbit
Isotype:	IgG
Clonality:	Polyclonal
Immunogen:	The immunogen for anti-CCDC117 antibody: synthetic peptide directed towards the middle region of human CCDC117. Synthetic peptide located within the following region: DTMKTGLKREFDEVFTKKMIESMSRPSMELVLWKPLPELLSDKPKPSSNT
Formulation:	Liquid. Purified antibody supplied in 1x PBS buffer with 0.09% (w/v) sodium azide and 2% sucrose. <i>Note that this product is shipped as lyophilized powder to China customers.</i>
Purification:	Affinity Purified
Conjugation:	Unconjugated
Storage:	Store at -20°C as received.
Stability:	Stable for 12 months from date of receipt.
Predicted Protein Size:	30 kDa
Gene Name:	coiled-coil domain containing 117
Database Link:	NP_775781 Entrez Gene 150275 Human Q8IWD4
Background:	The function of this protein remains unknown.
Synonyms:	dj366L4.1
Note:	Immunogen Sequence Homology:



[View online »](#)

Product images:



WB Suggested Anti-CCDC117 Antibody Titration:
0.2-1 ug/ml; Positive Control: COLO205 cell lysate