

## Product datasheet for **TA337782**

### SLC38A9 Rabbit Polyclonal Antibody

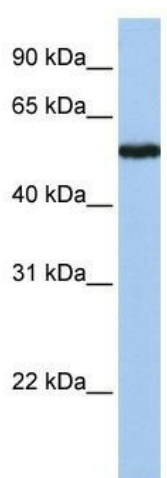
#### Product data:

Product Type:	Primary Antibodies
Applications:	WB
Recommended Dilution:	WB
Reactivity:	Human
Host:	Rabbit
Isotype:	IgG
Clonality:	Polyclonal
Immunogen:	The immunogen for anti-SLC38A9 antibody: synthetic peptide directed towards the middle region of human SLC38A9. Synthetic peptide located within the following region: VLMSNFLFNTGKFIFNFIHHINDTDTILSTNNSNPVICPSAGSGGHPDNS
Formulation:	Liquid. Purified antibody supplied in 1x PBS buffer with 0.09% (w/v) sodium azide and 2% sucrose. <i>Note that this product is shipped as lyophilized powder to China customers.</i>
Purification:	Affinity Purified
Conjugation:	Unconjugated
Storage:	Store at -20°C as received.
Stability:	Stable for 12 months from date of receipt.
Predicted Protein Size:	64 kDa
Gene Name:	solute carrier family 38 member 9
Database Link:	<a href="#">NP_775785</a> <a href="#">Entrez Gene 153129 Human</a> <a href="#">Q8NBW4</a>
Background:	The exact function of SLC38A9 remains unknown.
Synonyms:	URLC11
Note:	Immunogen Sequence Homology: Horse: 100%; Human: 100%; Rat: 93%; Mouse: 93%; Dog: 86%; Rabbit: 86%; Pig: 79%; Guinea pig: 79%
Protein Families:	Transmembrane



[View online »](#)

## Product images:



WB Suggested Anti-SLC38A9 Antibody Titration:  
0.2-1 ug/ml; Positive Control: Jurkat cell lysate