

## Product datasheet for **TA337780**

### C8orf45 (MCMDC2) Rabbit Polyclonal Antibody

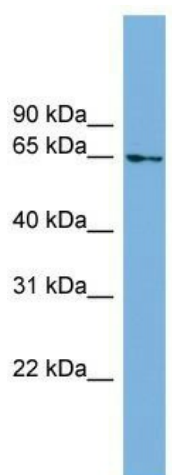
#### Product data:

Product Type:	Primary Antibodies
Applications:	WB
Recommended Dilution:	WB
Reactivity:	Human
Host:	Rabbit
Isotype:	IgG
Clonality:	Polyclonal
Immunogen:	The immunogen for anti-MCMDC2 antibody: synthetic peptide directed towards the middle region of human MCMDC2. Synthetic peptide located within the following region: IQAGSALLAKGGICFIGDLASHKKDKLEQLQTVLESRSITYIPGKKFGE
Formulation:	Liquid. Purified antibody supplied in 1x PBS buffer with 0.09% (w/v) sodium azide and 2% sucrose. <i>Note that this product is shipped as lyophilized powder to China customers.</i>
Purification:	Affinity Purified
Conjugation:	Unconjugated
Storage:	Store at -20°C as received.
Stability:	Stable for 12 months from date of receipt.
Predicted Protein Size:	65
Gene Name:	minichromosome maintenance domain containing 2
Database Link:	<a href="#">NP_775789</a> <a href="#">Entrez Gene 157777 Human</a> <a href="#">Q4G0Z9</a>
Background:	The function of this protein remains unknown.
Synonyms:	C8orf45
Note:	Immunogen Sequence Homology: Dog: 100%; Pig: 100%; Human: 100%; Bovine: 100%; Rabbit: 100%; Rat: 93%; Horse: 93%; Mouse: 93%; Guinea pig: 93%



[View online »](#)

## Product images:



WB Suggested Anti-MCMDC2 Antibody Titration:  
0.2-1 ug/ml; ELISA Titer: 1: 62500; Positive  
Control: Human heart