

Product datasheet for **TA337778**

Clavesin 1 (CLVS1) Rabbit Polyclonal Antibody

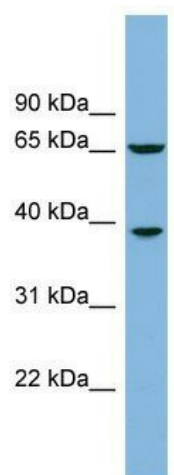
Product data:

Product Type:	Primary Antibodies
Applications:	WB
Recommended Dilution:	WB
Reactivity:	Human
Host:	Rabbit
Isotype:	IgG
Clonality:	Polyclonal
Immunogen:	The immunogen for anti-CLVS1 antibody: synthetic peptide directed towards the middle region of human CLVS1. Synthetic peptide located within the following region: MFKNFKADDPGIKRALIDGFPVLENRDHYGRKILLLFAANWDQSRNSFT
Formulation:	Liquid. Purified antibody supplied in 1x PBS buffer with 0.09% (w/v) sodium azide and 2% sucrose.
Purification:	Affinity Purified
Conjugation:	Unconjugated
Storage:	Store at -20°C as received.
Stability:	Stable for 12 months from date of receipt.
Predicted Protein Size:	41 kDa
Gene Name:	clavesin 1
Database Link:	NP_775790 Entrez Gene 157807 Human Q8IUQ0
Background:	CLVS1 contains 1 CRAL-TRIO domain. It may be used as a marker for human hepatocellular carcinomas.
Synonyms:	CRALBPL; RLBP1L1
Note:	Immunogen Sequence Homology: Dog: 100%; Pig: 100%; Rat: 100%; Horse: 100%; Human: 100%; Mouse: 100%; Bovine: 100%; Rabbit: 100%; Guinea pig: 100%; Zebrafish: 79%



[View online »](#)

Product images:



WB Suggested Anti-CLVS1 Antibody Titration: 0.2-1 ug/ml; ELISA Titer: 1: 1562500; Positive Control: THP-1 cell lysate