

Product datasheet for **TA337777**

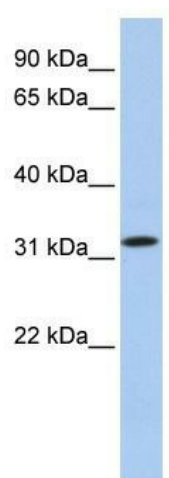
C15ORF26 (CFAP161) Rabbit Polyclonal Antibody

Product data:

Product Type:	Primary Antibodies
Applications:	WB
Recommended Dilution:	WB
Reactivity:	Human
Host:	Rabbit
Isotype:	IgG
Clonality:	Polyclonal
Immunogen:	The immunogen for anti-C15orf26 antibody: synthetic peptide directed towards the C terminal of human C15orf26. Synthetic peptide located within the following region: LINHCHTNRGLAAHRHLFLSTYFGKEAEVVAHTYLDShrVEKPRNHWMLV
Formulation:	Liquid. Purified antibody supplied in 1x PBS buffer with 0.09% (w/v) sodium azide and 2% sucrose. <i>Note that this product is shipped as lyophilized powder to China customers.</i>
Purification:	Affinity Purified
Conjugation:	Unconjugated
Storage:	Store at -20°C as received.
Stability:	Stable for 12 months from date of receipt.
Predicted Protein Size:	34 kDa
Gene Name:	cilia and flagella associated protein 161
Database Link:	NP_775799 Entrez Gene 161502 Human Q6P656
Background:	The exact function of C15orf26 remains unknown.
Synonyms:	FLJ38615
Note:	Immunogen Sequence Homology: Human: 100%; Dog: 93%; Pig: 93%; Horse: 93%; Bovine: 93%; Mouse: 79%; Guinea pig: 77%



[View online »](#)

Product images:

WB Suggested Anti-C15orf26 Antibody Titration:
0.2-1 ug/ml; Positive Control: 721_B cell lysate