

## Product datasheet for **TA337776**

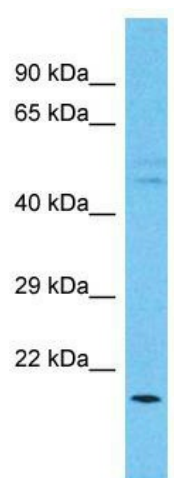
### **C15ORF26 (CFAP161) Rabbit Polyclonal Antibody**

#### **Product data:**

Product Type:	Primary Antibodies
Applications:	WB
Recommended Dilution:	WB
Reactivity:	Human
Host:	Rabbit
Isotype:	IgG
Clonality:	Polyclonal
Immunogen:	The immunogen for anti-C15orf26 antibody is: synthetic peptide directed towards the middle region of Human C15orf26. Synthetic peptide located within the following region: LCMTPDEIQSHLKDELEVPCGLSAVQAKTPIGRNTFIILSVHRDATGQVL
Formulation:	Liquid. Purified antibody supplied in 1x PBS buffer with 0.09% (w/v) sodium azide and 2% sucrose.
Purification:	Affinity Purified
Conjugation:	Unconjugated
Storage:	Store at -20°C as received.
Stability:	Stable for 12 months from date of receipt.
Predicted Protein Size:	21 kDa
Gene Name:	cilia and flagella associated protein 161
Database Link:	<a href="#">NP_775799</a> <a href="#">Entrez Gene 161502 Human</a> <a href="#">Q6P656</a>
Background:	The exact function of C15orf26 remains unknown.
Synonyms:	FLJ38615
Note:	Immunogen Sequence Homology: Human: 100%; Dog: 86%; Rabbit: 79%


[View online »](#)

## Product images:



Host: Rabbit; Target Name: C15orf26; Sample  
Tissue: Esophagus Tumor lysates; Antibody  
Dilution: 1.0 ug/ml