

## Product datasheet for **TA337775**

### C18orf54 Rabbit Polyclonal Antibody

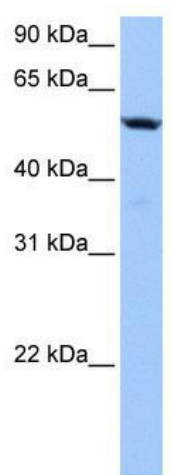
#### Product data:

Product Type:	Primary Antibodies
Applications:	WB
Recommended Dilution:	WB
Reactivity:	Human
Host:	Rabbit
Isotype:	IgG
Clonality:	Polyclonal
Immunogen:	The immunogen for anti-C18orf54 antibody: synthetic peptide directed towards the middle region of human C18orf54. Synthetic peptide located within the following region: PCSLDKLEADRSWENIPVTFKSPVPVNSDDSPQQTSTRAKSAKGVLEDFLN
Formulation:	Liquid. Purified antibody supplied in 1x PBS buffer with 0.09% (w/v) sodium azide and 2% sucrose. <i>Note that this product is shipped as lyophilized powder to China customers.</i>
Purification:	Affinity Purified
Conjugation:	Unconjugated
Storage:	Store at -20°C as received.
Stability:	Stable for 12 months from date of receipt.
Predicted Protein Size:	58 kDa
Gene Name:	chromosome 18 open reading frame 54
Database Link:	<a href="#">NP_775800</a> <a href="#">Entrez Gene 162681 Human</a> <a href="#">Q8IYD9</a>
Background:	The exact function of C18orf54 remains unknown.
Synonyms:	LAS2
Note:	Immunogen Sequence Homology: Rat: 100%; Horse: 100%; Human: 100%; Dog: 92%; Pig: 92%; Guinea pig: 85%
Protein Families:	Secreted Protein



[View online »](#)

## Product images:



WB Suggested Anti-C18orf54 Antibody Titration:  
0.2-1 ug/ml; Positive Control: Hela cell lysate