

Product datasheet for **TA337774**

APLF Rabbit Polyclonal Antibody

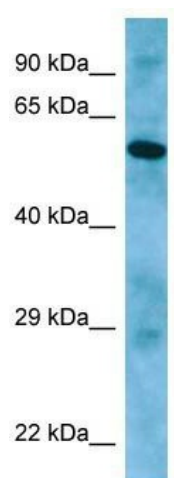
Product data:

Product Type:	Primary Antibodies
Applications:	WB
Recommended Dilution:	WB
Reactivity:	Human
Host:	Rabbit
Isotype:	IgG
Clonality:	Polyclonal
Immunogen:	The immunogen for anti-APLF antibody is: synthetic peptide directed towards the C-terminal region of Human APLF. Synthetic peptide located within the following region: NVLDEDNDNVGQPNEYDLNDSFLDDEEEDYEPTDESDWEPGKEDEEKED
Formulation:	Liquid. Purified antibody supplied in 1x PBS buffer with 0.09% (w/v) sodium azide and 2% sucrose. <i>Note that this product is shipped as lyophilized powder to China customers.</i>
Purification:	Affinity Purified
Conjugation:	Unconjugated
Storage:	Store at -20°C as received.
Stability:	Stable for 12 months from date of receipt.
Predicted Protein Size:	57 kDa
Gene Name:	aprataxin and PNKP like factor
Database Link:	NP_775816 Entrez Gene 200558 Human Q8IW19
Background:	C2ORF13 is a component of the cellular response to chromosomal DNA single- and double-strand breaks.
Synonyms:	APFL; C2orf13; PALF; Xip1; ZCCHH1
Note:	Immunogen Sequence Homology: Human: 100%; Pig: 93%; Rat: 86%; Horse: 86%; Bovine: 86%; Rabbit: 86%; Mouse: 79%



[View online »](#)

Product images:



WB Suggested Anti-APLF Antibody; Titration: 1.0 ug/ml; Positive Control: PANC1 Whole Cell