

Product datasheet for **TA337770**

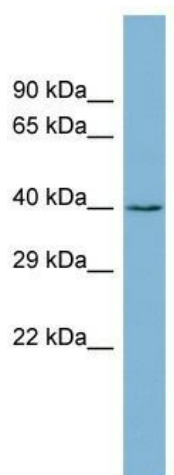
ZCCHC12 Rabbit Polyclonal Antibody

Product data:

Product Type:	Primary Antibodies
Applications:	WB
Recommended Dilution:	WB
Reactivity:	Human
Host:	Rabbit
Isotype:	IgG
Clonality:	Polyclonal
Immunogen:	The immunogen for anti-ZCCHC12 antibody: synthetic peptide directed towards the middle region of human ZCCHC12. Synthetic peptide located within the following region: EKASLYVIRLEVQLQNAIQAGIIAEKDANRTRLQQLLLGGELSRDLRLRL
Formulation:	Liquid. Purified antibody supplied in 1x PBS buffer with 0.09% (w/v) sodium azide and 2% sucrose.
Purification:	Affinity Purified
Conjugation:	Unconjugated
Storage:	Store at -20°C as received.
Stability:	Stable for 12 months from date of receipt.
Predicted Protein Size:	45 kDa
Gene Name:	zinc finger CCHC-type containing 12
Database Link:	NP_776159 Entrez Gene 170261 Human Q6PEW1
Background:	ZCCHC12 contains 1 CCHC-type zinc finger. ZCCHC12 is the transcriptional coactivator in the bone morphogenetic protein (BMP)-signaling pathway. It positively modulates BMP signaling by interacting with SMAD1 and associating with CBP in the transcription c
Synonyms:	PNMA7A; SIZN; SIZN1
Note:	Immunogen Sequence Homology: Dog: 100%; Pig: 100%; Rat: 100%; Horse: 100%; Human: 100%; Mouse: 100%; Bovine: 100%; Rabbit: 100%; Guinea pig: 100%



[View online »](#)

Product images:

WB Suggested Anti-ZCCHC12 Antibody Titration:
0.2-1 ug/ml; ELISA Titer: 1: 312500; Positive
Control: Human Stomach