

## Product datasheet for **TA337769**

### ZCCHC12 Rabbit Polyclonal Antibody

#### Product data:

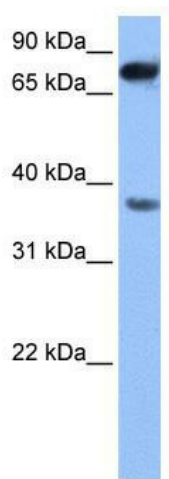
Product Type:	Primary Antibodies
Applications:	WB
Recommended Dilution:	WB
Reactivity:	Human
Host:	Rabbit
Isotype:	IgG
Clonality:	Polyclonal
Immunogen:	The immunogen for anti-ZCCHC12 antibody: synthetic peptide directed towards the N terminal of human ZCCHC12. Synthetic peptide located within the following region: AREVMRVLQATNPNLSVADFLRAMKLVFGESESSVTAHGKFFNTLQAQGE
Formulation:	Liquid. Purified antibody supplied in 1x PBS buffer with 0.09% (w/v) sodium azide and 2% sucrose.
Purification:	Affinity Purified
Conjugation:	Unconjugated
Storage:	Store at -20°C as received.
Stability:	Stable for 12 months from date of receipt.
Predicted Protein Size:	45 kDa
Gene Name:	zinc finger CCHC-type containing 12
Database Link:	<a href="#">NP_776159</a> <a href="#">Entrez Gene 170261 Human</a> <a href="#">Q6PEW1</a>
Background:	ZCCHC12 contains 1 CCHC-type zinc finger. ZCCHC12 is the transcriptional coactivator in the bone morphogenetic protein (BMP)-signaling pathway. It positively modulates BMP signaling by interacting with SMAD1 and associating with CBP in the transcription complex. It contributes to the BMP-induced enhancement of cholinergic-neuron-specific gene expression.
Synonyms:	PNMA7A; SIZN; SIZN1



[View online »](#)

**Note:** Immunogen Sequence Homology: Pig: 100%; Human: 100%; Rabbit: 100%; Dog: 93%; Rat: 93%; Horse: 93%; Mouse: 93%; Bovine: 93%; Guinea pig: 93%

**Product images:**



WB Suggested Anti-ZCCHC12 Antibody Titration:  
0.2-1 ug/ml; Positive Control: HepG2 cell lysate