

## Product datasheet for **TA337768**

### Mimitin (NDUFAF2) Rabbit Polyclonal Antibody

#### Product data:

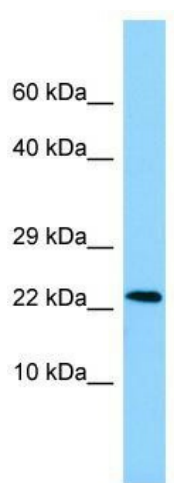
Product Type:	Primary Antibodies
Applications:	WB
Recommended Dilution:	WB
Reactivity:	Human
Host:	Rabbit
Isotype:	IgG
Clonality:	Polyclonal
Immunogen:	The immunogen for anti-NDUFAF2 antibody is: synthetic peptide directed towards the N-terminal region of Human NDUFAF2. Synthetic peptide located within the following region: HVGTDQFGNKYYYIPQYKNWRGQTIREKRIVEAANKKEVDYEAGDIPTEW
Formulation:	Liquid. Purified antibody supplied in 1x PBS buffer with 0.09% (w/v) sodium azide and 2% sucrose. <i>Note that this product is shipped as lyophilized powder to China customers.</i>
Purification:	Affinity Purified
Conjugation:	Unconjugated
Storage:	Store at -20°C as received.
Stability:	Stable for 12 months from date of receipt.
Predicted Protein Size:	20 kDa
Gene Name:	NADH:ubiquinone oxidoreductase complex assembly factor 2
Database Link:	<a href="#">NP_777549</a> <a href="#">Entrez Gene 91942 Human</a> <a href="#">Q8N183</a>
Background:	NADH:ubiquinone oxidoreductase (complex I) catalyzes the transfer of electrons from NADH to ubiquinone (coenzyme Q) in the first step of the mitochondrial respiratory chain, resulting in the translocation of protons across the inner mitochondrial membrane. This gene encodes a complex I assembly factor. Mutations in this gene cause progressive encephalopathy resulting from mitochondrial complex I deficiency.
Synonyms:	B17.2L; mimitin; MMTN; NDUFA12L



[View online »](#)

**Note:** Immunogen Sequence Homology: Dog: 100%; Human: 100%; Horse: 93%; Mouse: 93%; Rabbit: 93%; Bovine: 86%

**Product images:**



WB Suggested Anti-NDUFAF2 Antibody; Titration: 1.0 ug/ml; Positive Control: MCF7 Whole Cell