

Product datasheet for **TA337761**

TRAR4 (TAAR6) Rabbit Polyclonal Antibody

Product data:

Product Type:	Primary Antibodies
Applications:	IHC, WB
Recommended Dilution:	IF, WB
Reactivity:	Mouse, Human, Macaque
Host:	Rabbit
Isotype:	IgG
Clonality:	Polyclonal
Immunogen:	The immunogen for anti-TAAR6 antibody is: synthetic peptide directed towards the C-terminal region of Human TAAR6. Synthetic peptide located within the following region: YGNIFLVARRQAKKIENTGSKTESSSESYKARVARRERKAAKTLGVTVA
Formulation:	Liquid. Purified antibody supplied in 1x PBS buffer with 0.09% (w/v) sodium azide and 2% sucrose. <i>Note that this product is shipped as lyophilized powder to China customers.</i>
Purification:	Affinity Purified
Conjugation:	Unconjugated
Storage:	Store at -20°C as received.
Stability:	Stable for 12 months from date of receipt.
Predicted Protein Size:	38 kDa
Gene Name:	trace amine associated receptor 6
Database Link:	NP_778237 Entrez Gene 215855 Mouse Entrez Gene 319100 Human Q96RI8
Background:	This gene encodes a seven-transmembrane G-protein-coupled receptor that likely functions as a receptor for endogenous trace amines. Mutations in this gene may be associated with schizophrenia.
Synonyms:	TA4; taR-4; taR-6; TAR4; TAR6; TRAR4
Note:	Immunogen Sequence Homology: Rat: 100%; Horse: 100%; Human: 100%; Mouse: 100%; Rabbit: 100%; Pig: 93%; Bovine: 93%; Guinea pig: 93%; Dog: 92%; Zebrafish: 85%

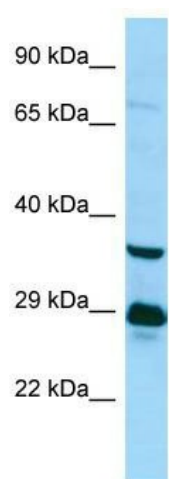


[View online »](#)

Protein Families: Druggable Genome, GPCR, Transmembrane

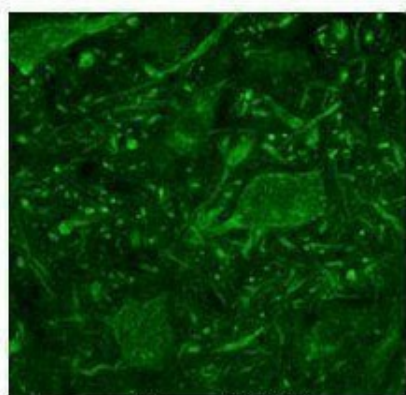
Protein Pathways: Neuroactive ligand-receptor interaction

Product images:



WB Suggested Anti-TAAR6 Antibody; Titration: 1.0 ug/ml; Positive Control: A549 Whole Cell

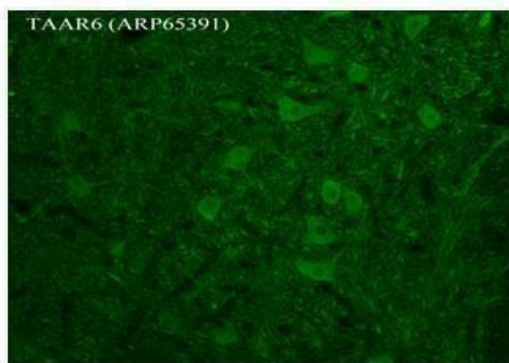
TAAR6



Green: TAAR6

Researcher: Timur Mavlyutov, University of Wisconsin Medical School; Application: IHC; Species+tissue/cell type: Ventral horn region of mouse spinal cord; Primary antibody dilution: 1:200; Secondary antibody: Donkey anti-rabbit CY2; Secondary antibody dil

TAAR6



Green: TAAR6

Researcher: Timur Mavlyutov, Ph. D., University of Wisconsin Medical School; Application: IHC; Species+tissue/cell type: Rhesus macaque spinal cord; Primary antibody dilution: 1:300; Secondary antibody: Donkey anti Rabbit 488; Secondary antibody dilution: 1