

## Product datasheet for TA337760

### Gpr4 Rabbit Polyclonal Antibody

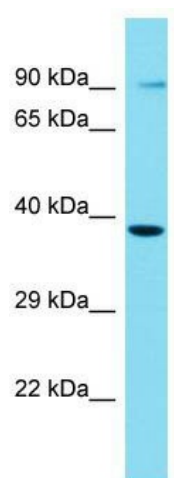
#### Product data:

|                         |  |
|-------------------------|--|
| Product Type:           | Primary Antibodies   |
| Applications:           | WB   |
| Recommended Dilution:   | WB   |
| Reactivity:             | Mouse  |
| Host:                   | Rabbit   |
| Isotype:                | IgG  |
| Clonality:              | Polyclonal   |
| Immunogen:              | The immunogen for anti-Gpr4 antibody is: synthetic peptide directed towards the middle region of Mouse Gpr4. Synthetic peptide located within the following region:<br>LCYRGILRAVQSSVSTERQEKVKIKRLALSIAIVLVCFAPYHALLLSRS |
| Formulation:            | Liquid. Purified antibody supplied in 1x PBS buffer with 0.09% (w/v) sodium azide and 2% sucrose.<br><i>Note that this product is shipped as lyophilized powder to China customers.</i>                                  |
| Purification:           | Affinity Purified  |
| Conjugation:            | Unconjugated   |
| Storage:                | Store at -20°C as received.  |
| Stability:              | Stable for 12 months from date of receipt.   |
| Predicted Protein Size: | 41 kDa   |
| Gene Name:              | G protein-coupled receptor 4   |
| Database Link:          | <a href="#">NP_783599</a><br><a href="#">Entrez Gene 319197 Mouse</a><br><a href="#">Q8BUD0</a>  |
| Background:             | Gpr4 is a proton-sensing receptor coupled to several G-proteins, including G(s), G(13) and G(q)/G(11) proteins, leading to cAMP production.  |
| Synonyms:               | GPR4   |
| Note:                   | Immunogen Sequence Homology: Dog: 100%; Pig: 100%; Human: 100%; Rat: 93%; Bovine: 93%; Zebrafish: 93%; Mouse: 92%  |



[View online »](#)

## Product images:



Host: Rabbit; Target Name: Gpr4; Sample Tissue: Mouse Liver lysates; Antibody Dilution: 1.0 ug/ml