

## Product datasheet for **TA337758**

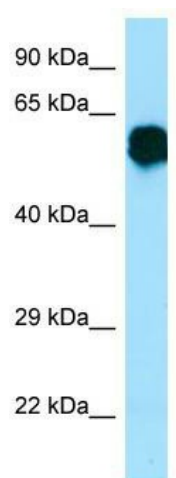
### CR1L Rabbit Polyclonal Antibody

#### Product data:

Product Type:	Primary Antibodies
Applications:	WB
Recommended Dilution:	WB
Reactivity:	Human
Host:	Rabbit
Isotype:	IgG
Clonality:	Polyclonal
Immunogen:	The immunogen for anti-CR1L antibody is: synthetic peptide directed towards the middle region of Human CR1L. Synthetic peptide located within the following region: ALNKWEPELPSCSRVCQPPDVLHAERTQRDKDNFSPGQEVFYSCEPGYD
Formulation:	Liquid. Purified antibody supplied in 1x PBS buffer with 0.09% (w/v) sodium azide and 2% sucrose. <i>Note that this product is shipped as lyophilized powder to China customers.</i>
Purification:	Affinity Purified
Conjugation:	Unconjugated
Storage:	Store at -20°C as received.
Stability:	Stable for 12 months from date of receipt.
Predicted Protein Size:	59 kDa
Gene Name:	complement component 3b/4b receptor 1-like
Database Link:	<a href="#">NP_783641</a> <a href="#">Entrez Gene 1379 Human</a> <a href="#">Q2VPA4</a>
Background:	The function of this protein remains unknown.
Synonyms:	MGC129536
Note:	Immunogen Sequence Homology: Human: 100%
Protein Families:	Druggable Genome



[View online »](#)

**Product images:**

WB Suggested Anti-CR1L Antibody; Titration: 1.0 ug/ml; Positive Control: Fetal Brain