

Product datasheet for **TA337755**

Alpha Taxilin (TXLNA) Rabbit Polyclonal Antibody

Product data:

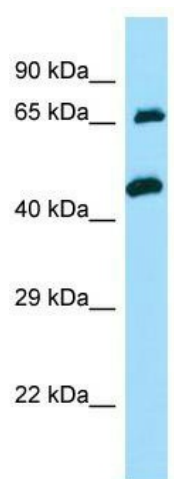
Product Type:	Primary Antibodies
Applications:	WB
Recommended Dilution:	WB
Reactivity:	Human
Host:	Rabbit
Isotype:	IgG
Clonality:	Polyclonal
Immunogen:	The immunogen for anti-TXLNA antibody is: synthetic peptide directed towards the C-terminal region of Human TXLNA. Synthetic peptide located within the following region: LTDSGPERRPEPGAQAPSSPRVTEAPCYPGAPSTEASGQTGPQEPT SAR
Formulation:	Liquid. Purified antibody supplied in 1x PBS buffer with 0.09% (w/v) sodium azide and 2% sucrose. <i>Note that this product is shipped as lyophilized powder to China customers.</i>
Purification:	Affinity Purified
Conjugation:	Unconjugated
Storage:	Store at -20°C as received.
Stability:	Stable for 12 months from date of receipt.
Predicted Protein Size:	62 kDa
Gene Name:	taxilin alpha
Database Link:	NP_787048 Entrez Gene 200081 Human P40222
Background:	TXLNA may be involved in intracellular vesicle traffic and potentially in calcium-dependent exocytosis in neuroendocrine cells.
Synonyms:	IL14; TXLN
Note:	Immunogen Sequence Homology: Human: 100%; Dog: 86%; Horse: 86%; Bovine: 86%; Rat: 79%



[View online »](#)

Protein Families: Druggable Genome

Product images:



WB Suggested Anti-TXLNA Antibody; Titration: 1.0 ug/ml; Positive Control: Jurkat Whole Cell TXLNA is supported by BioGPS gene expression data to be expressed in Jurkat