

Product datasheet for **TA337754**

G6pc3 Rabbit Polyclonal Antibody

Product data:

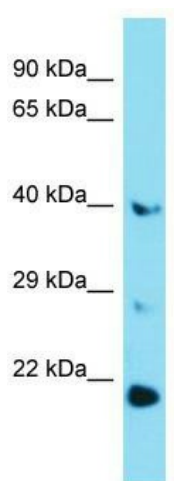
Product Type:	Primary Antibodies
Applications:	WB
Recommended Dilution:	WB
Reactivity:	Mouse
Host:	Rabbit
Isotype:	IgG
Clonality:	Polyclonal
Immunogen:	The immunogen for anti-G6pc3 antibody is: synthetic peptide directed towards the middle region of Mouse G6pc3. Synthetic peptide located within the following region: PEWVHMDSRPFASLSRDSGSALGLGIALHTPCYAQIRRAHLGNGQKIAC
Formulation:	Liquid. Purified antibody supplied in 1x PBS buffer with 0.09% (w/v) sodium azide and 2% sucrose. <i>Note that this product is shipped as lyophilized powder to China customers.</i>
Purification:	Affinity Purified
Conjugation:	Unconjugated
Storage:	Store at -20°C as received.
Stability:	Stable for 12 months from date of receipt.
Predicted Protein Size:	39 kDa
Gene Name:	glucose 6 phosphatase, catalytic, 3
Database Link:	NP_787949 Entrez Gene 68401 Mouse Q6NSQ9
Background:	G6pc3 hydrolyzes glucose-6-phosphate to glucose in the endoplasmic reticulum. It may form with the glucose-6-phosphate transporter (SLC37A4/G6PT) a ubiquitously expressed complex responsible for glucose production through glycogenolysis and gluconeogenesis. G6pc3 probably required for normal neutrophil function.
Synonyms:	G6Pase-beta; SCN4; UGRP



[View online »](#)

Note: Immunogen Sequence Homology: Dog: 100%; Pig: 100%; Rat: 100%; Human: 100%; Bovine: 100%; Rabbit: 100%; Guinea pig: 100%; Horse: 93%; Mouse: 93%

Product images:



Host: Rabbit; Target Name: G6pc3; Sample Tissue: Mouse Liver lysates; Antibody Dilution: 1.0 ug/ml