

## Product datasheet for **TA337753**

### NICE2 (S100A7A) Rabbit Polyclonal Antibody

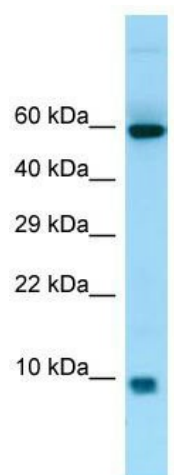
#### Product data:

Product Type:	Primary Antibodies
Applications:	WB
Recommended Dilution:	WB
Reactivity:	Human
Host:	Rabbit
Isotype:	IgG
Clonality:	Polyclonal
Immunogen:	The immunogen for anti-S100A7A antibody is: synthetic peptide directed towards the middle region of Human S100A7A. Synthetic peptide located within the following region: CDKKGIIHYLATVFEKKDKNEDKKIDFSEFLSLLGDIAADYHKQSHGAAPC
Formulation:	Liquid. Purified antibody supplied in 1x PBS buffer with 0.09% (w/v) sodium azide and 2% sucrose. <i>Note that this product is shipped as lyophilized powder to China customers.</i>
Purification:	Affinity Purified
Conjugation:	Unconjugated
Storage:	Store at -20°C as received.
Stability:	Stable for 12 months from date of receipt.
Predicted Protein Size:	11 kDa
Gene Name:	S100 calcium binding protein A7A
Database Link:	<a href="#">NP_789793</a> <a href="#">Entrez Gene 338324 Human</a> <a href="#">Q86SG5</a>
Background:	S100A7A may be involved in epidermal differentiation and inflammation and might therefore be important for the pathogenesis of psoriasis and other diseases.
Synonyms:	NICE-2; S100A7f; S100A7L1; S100A15
Note:	Immunogen Sequence Homology: Human: 100%; Horse: 93%; Bovine: 93%; Goat: 86%



[View online »](#)

## Product images:



WB Suggested Anti-S100A7A Antibody; Titration:  
1.0 ug/ml; Positive Control: Fetal Heart