

Product datasheet for **TA337751**

TAS1R1 Rabbit Polyclonal Antibody

Product data:

Product Type:	Primary Antibodies
Applications:	WB
Recommended Dilution:	WB
Reactivity:	Human
Host:	Rabbit
Isotype:	IgG
Clonality:	Polyclonal
Immunogen:	The immunogen for anti-TAS1R1 antibody is: synthetic peptide directed towards the C-terminal region of Human TAS1R1. Synthetic peptide located within the following region: NINETKIQWHGKDNQVPKSVCSDDCLEGHQRVVTGFHHCCFECVPCGAGT
Formulation:	Liquid. Purified antibody supplied in 1x PBS buffer with 0.09% (w/v) sodium azide and 2% sucrose. <i>Note that this product is shipped as lyophilized powder to China customers.</i>
Purification:	Affinity Purified
Conjugation:	Unconjugated
Storage:	Store at -20°C as received.
Stability:	Stable for 12 months from date of receipt.
Predicted Protein Size:	35 kDa
Gene Name:	taste 1 receptor member 1
Database Link:	NP_803884 Entrez Gene 80835 Human Q7RTX1
Background:	The protein encoded by this gene is a G protein-coupled receptor and is a component of the heterodimeric amino acid taste receptor T1R1+3. The T1R1+3 receptor responds to L-amino acids but not to D-enantiomers or other compounds. Most amino acids that are perceived as sweet activate T1R1+3, and this activation is strictly dependent on an intact T1R1+3 heterodimer. Multiple transcript variants encoding different isoforms have been found for this gene.



[View online »](#)

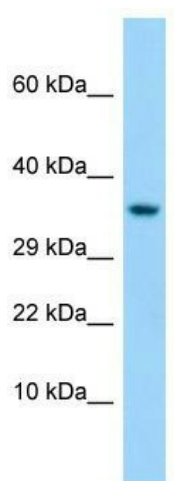
Synonyms: GM148; GPR70; T1R1; TR1

Note: Immunogen Sequence Homology: Human: 100%; Horse: 93%; Pig: 92%; Guinea pig: 92%; Rat: 91%; Dog: 86%; Bovine: 85%; Mouse: 83%; Rabbit: 83%

Protein Families: Druggable Genome, Transmembrane

Protein Pathways: Taste transduction

Product images:



Host: Rabbit; Target Name: TAS1R1; Sample Tissue: HepG2 Whole cell lysates; Antibody Dilution: 1.0 ug/ml