

Product datasheet for **TA337750**

Dgkd Rabbit Polyclonal Antibody

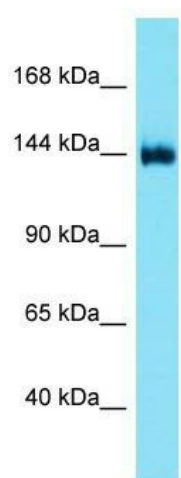
Product data:

Product Type:	Primary Antibodies
Applications:	WB
Recommended Dilution:	WB
Reactivity:	Mouse
Host:	Rabbit
Isotype:	IgG
Clonality:	Polyclonal
Immunogen:	The immunogen for anti-Dgkd antibody is: synthetic peptide directed towards the middle region of Mouse Dgkd. Synthetic peptide located within the following region: MAYETKLPRQASSSTVTEDFSEDSEVQQILFYEDSVAAHLSKILTSDQHS
Formulation:	Liquid. Purified antibody supplied in 1x PBS buffer with 0.09% (w/v) sodium azide and 2% sucrose. <i>Note that this product is shipped as lyophilized powder to China customers.</i>
Purification:	Affinity Purified
Conjugation:	Unconjugated
Storage:	Store at -20°C as received.
Stability:	Stable for 12 months from date of receipt.
Predicted Protein Size:	134 kDa
Gene Name:	diacylglycerol kinase, delta
Database Link:	NP_808314 Entrez Gene 227333 Mouse E9PUQ8
Background:	The function of this protein remains unknown.
Synonyms:	DGK-delta; dgkd-2; DGKdelta; FLJ26930; KIAA0145
Note:	Immunogen Sequence Homology: Rat: 100%; Horse: 100%; Human: 100%; Mouse: 100%; Dog: 93%; Pig: 93%; Rabbit: 93%; Guinea pig: 93%; Bovine: 79%



[View online »](#)

Product images:



Host: Rabbit; Target Name: Dgkd; Sample Tissue: Mouse Liver lysates; Antibody Dilution: 1.0 ug/ml