

Product datasheet for **TA337749**

Erc2 Rabbit Polyclonal Antibody

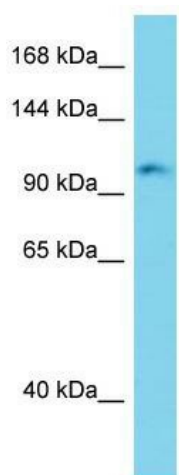
Product data:

Product Type:	Primary Antibodies
Applications:	WB
Recommended Dilution:	WB
Reactivity:	Mouse
Host:	Rabbit
Isotype:	IgG
Clonality:	Polyclonal
Immunogen:	The immunogen for anti-Erc2 antibody is: synthetic peptide directed towards the C-terminal region of Mouse Erc2. Synthetic peptide located within the following region: TQNRMKLMADNYDEDHHHHYHHHHHHHHHRSPGRSQHSNHRPSDQLSEGL
Formulation:	Liquid. Purified antibody supplied in 1x PBS buffer with 0.09% (w/v) sodium azide and 2% sucrose. <i>Note that this product is shipped as lyophilized powder to China customers.</i>
Purification:	Affinity Purified
Conjugation:	Unconjugated
Storage:	Store at -20°C as received.
Stability:	Stable for 12 months from date of receipt.
Predicted Protein Size:	115 kDa
Gene Name:	ELKS/RAB6-interacting/CAST family member 2
Database Link:	NP_808482 Entrez Gene 238988 Mouse Q6PH08
Background:	Erc2 is thought to be involved in the organization of the cytomatrix at the nerve terminals active zone (CAZ) which regulates neurotransmitter release. It seems to act together with BSN and may recruit liprin-alpha proteins to the CAZ.
Synonyms:	CAST; CAST1; ELKSL; KIAA0378; MGC133063; MGC133064; SPBC110; Spc110
Note:	Immunogen Sequence Homology: Dog: 100%; Pig: 100%; Rat: 100%; Horse: 100%; Human: 100%; Mouse: 100%; Rabbit: 100%; Guinea pig: 100%



[View online »](#)

Product images:



Host: Rabbit; Target Name: Erc2; Sample Tissue: Mouse Liver lysates; Antibody Dilution: 1.0 ug/ml