

## Product datasheet for **TA337748**

### OTOP1 Rabbit Polyclonal Antibody

#### Product data:

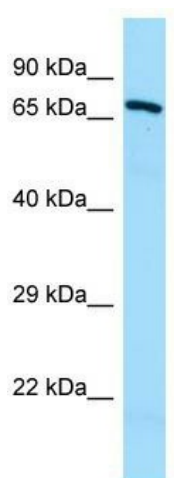
Product Type:	Primary Antibodies
Applications:	WB
Recommended Dilution:	WB
Reactivity:	Human
Host:	Rabbit
Isotype:	IgG
Clonality:	Polyclonal
Immunogen:	The immunogen for anti-OTOP1 antibody is: synthetic peptide directed towards the C-terminal region of Human OTOP1. Synthetic peptide located within the following region: KTKSESALIMFYLYAITLLMLMGAAGLAGIRIYRIDEKSLDESKNPARKL
Formulation:	Liquid. Purified antibody supplied in 1x PBS buffer with 0.09% (w/v) sodium azide and 2% sucrose. <i>Note that this product is shipped as lyophilized powder to China customers.</i>
Purification:	Affinity Purified
Conjugation:	Unconjugated
Storage:	Store at -20°C as received.
Stability:	Stable for 12 months from date of receipt.
Predicted Protein Size:	67 kDa
Gene Name:	otopetrin 1
Database Link:	<a href="#">NP_819056</a> <a href="#">Entrez Gene 133060 Human</a> <a href="#">Q7RTM1</a>
Background:	OTOP1 is required for normal formation of otoconia in the inner ear. OTOP1 inhibits P2Y purinoceptors and modulates calcium homeostasis and influx of calcium in response to extracellular ATP.
Synonyms:	MGC163302; MGC163304
Note:	Immunogen Sequence Homology: Pig: 100%; Rat: 100%; Horse: 100%; Human: 100%; Mouse: 100%; Guinea pig: 100%; Bovine: 93%; Rabbit: 93%; Dog: 86%



[View online »](#)

Protein Families: Transmembrane

### Product images:



WB Suggested Anti-OTOP1 Antibody; Titration:  
1.0 ug/ml; Positive Control: Fetal Lung