

Product datasheet for **TA337747**

DGKH Rabbit Polyclonal Antibody

Product data:

Product Type:	Primary Antibodies
Applications:	WB
Recommended Dilution:	WB
Reactivity:	Human
Host:	Rabbit
Isotype:	IgG
Clonality:	Polyclonal
Immunogen:	The immunogen for anti-DGKH antibody: synthetic peptide directed towards the middle region of human DGKH. Synthetic peptide located within the following region: EPANQSSDYDSTETDESKEEAKDDGAKESITVKTAPRSPDARASYGHSQT
Formulation:	Liquid. Purified antibody supplied in 1x PBS buffer with 0.09% (w/v) sodium azide and 2% sucrose. <i>Note that this product is shipped as lyophilized powder to China customers.</i>
Purification:	Affinity Purified
Conjugation:	Unconjugated
Storage:	Store at -20°C as received.
Stability:	Stable for 12 months from date of receipt.
Predicted Protein Size:	135 kDa
Gene Name:	diacylglycerol kinase eta
Database Link:	NP_821077 Entrez Gene 160851 Human Q86XP1
Background:	This gene encodes a member of the diacylglycerol kinase (DGK) enzyme family. Members of this family are involved in regulating intracellular concentrations of diacylglycerol and phosphatidic acid. Variation in this gene has been associated with bipolar disorder. Alternatively spliced transcript variants have been identified. [provided by RefSeq, Jul 2014]
Synonyms:	DGKeta
Note:	Immunogen Sequence Homology: Human: 100%; Dog: 79%; Horse: 79%

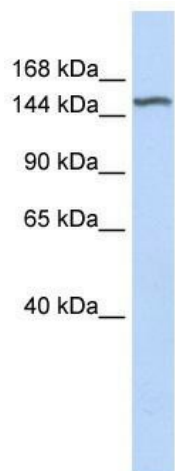


[View online »](#)

Protein Families: Druggable Genome

Protein Pathways: Glycerolipid metabolism, Glycerophospholipid metabolism, Metabolic pathways, Phosphatidylinositol signaling system

Product images:



WB Suggested Anti-DGKH Antibody Titration: 0.2-1 ug/ml; ELISA Titer: 1: 12500; Positive Control: Human Liver