

Product datasheet for TA337746

DGKH Rabbit Polyclonal Antibody

Product data:

Product Type:	Primary Antibodies
Applications:	IHC, WB
Recommended Dilution:	IHC, WB
Reactivity:	Mouse, Human
Host:	Rabbit
Isotype:	IgG
Clonality:	Polyclonal
Immunogen:	The immunogen for anti-DGKH antibody: synthetic peptide directed towards the middle region of human DGKH. Synthetic peptide located within the following region: DLDSVDGYSEKCVMNYYFGIGLDAKISLEFNNKREEHPEKCRSRTKNLMW
Formulation:	Liquid. Purified antibody supplied in 1x PBS buffer with 0.09% (w/v) sodium azide and 2% sucrose. <i>Note that this product is shipped as lyophilized powder to China customers.</i>
Purification:	Affinity Purified
Conjugation:	Unconjugated
Storage:	Store at -20°C as received.
Stability:	Stable for 12 months from date of receipt.
Predicted Protein Size:	135 kDa
Gene Name:	diacylglycerol kinase eta
Database Link:	NP_821077 Entrez Gene 380921 Mouse Entrez Gene 160851 Human Q86XP1
Background:	This gene encodes a member of the diacylglycerol kinase (DGK) enzyme family. Members of this family are involved in regulating intracellular concentrations of diacylglycerol and phosphatidic acid. Variation in this gene has been associated with bipolar disorder. Alternatively spliced transcript variants have been identified. [provided by RefSeq, Jul 2014]
Synonyms:	DGKeta



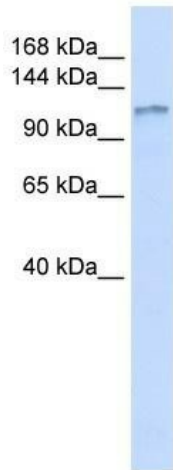
[View online »](#)

Note: Immunogen Sequence Homology: Dog: 100%; Pig: 100%; Rat: 100%; Horse: 100%; Human: 100%; Mouse: 100%; Bovine: 100%; Rabbit: 100%; Zebrafish: 100%; Guinea pig: 100%

Protein Families: Druggable Genome

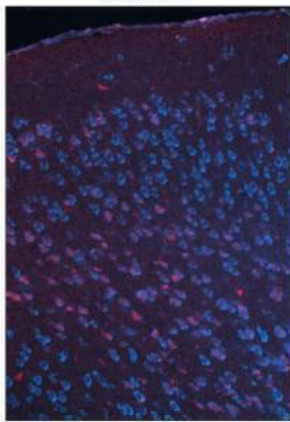
Protein Pathways: Glycerolipid metabolism, Glycerophospholipid metabolism, Metabolic pathways, Phosphatidylinositol signaling system

Product images:



WB Suggested Anti-DGKH Antibody Titration: 0.2-1 ug/ml; ELISA Titer: 1: 1562500; Positive Control: Human heart

DGKH



Red: DGKH Cyan: Nissl (Neurons)

Sample Type: Adult mouse cortex Primary Antibody Dilution: 1: 500; Secondary Antibody: Anti-rabbit-Cy3; Secondary Antibody: Dilution: 1: 1000; Color/Signal Descriptions: Red: DGKH Cyan: Nissl (Neurons); Gene Name: DGKH; Submitted by: Joshua R. Sanes, Mole